



MICHIGAN DEPARTMENT OF
ENVIRONMENT, GREAT LAKES, AND ENERGY

New Local Health Leader Orientation

August 2019

Dana DeBruyn REHS

Environmental Health Section Manager

517-930-6463 | DeBruynD@Michigan.gov



This
Presentation
Covers

- Environmental Health (EH) Section Structure within the Drinking Water and Environmental Health Division (DWEHD)
- EGLE's Role
- Funding for EH Programs
- LHD's Role
- Timelines and Responsibilities
- EHS Links
- EGLE Contacts

DWEHD Mission-
*Safeguarding
Michigan's
Drinking Water and
Environmental
Health*

Vision-
*Michigan Values and
Invests in Safe and
Reliable Water*



Environmental Health Section

```
graph TD; A[Environmental Health Section] --> B[Source Water Unit]; A --> C[Noncommunity Water Supplies Unit]; A --> D[Environmental Health Programs Unit]; B --> E["Well Construction<br/>Contamination Investigation<br/>Source Water"]; D --> F["Onsite Wastewater<br/>Septage<br/>Swimming Pools<br/>Campgrounds"];
```

Source Water
Unit

Noncommunity
Water Supplies
Unit

Environmental
Health
Programs Unit

Well Construction
Contamination
Investigation
Source Water

Onsite Wastewater
Septage
Swimming Pools
Campgrounds

EGLE staff are assigned to LHDs for each EH program. EGLE staff:

**ALL
Programs**

Provide
technical
assistance

Help with
laws/rules
interpretation

Provide training

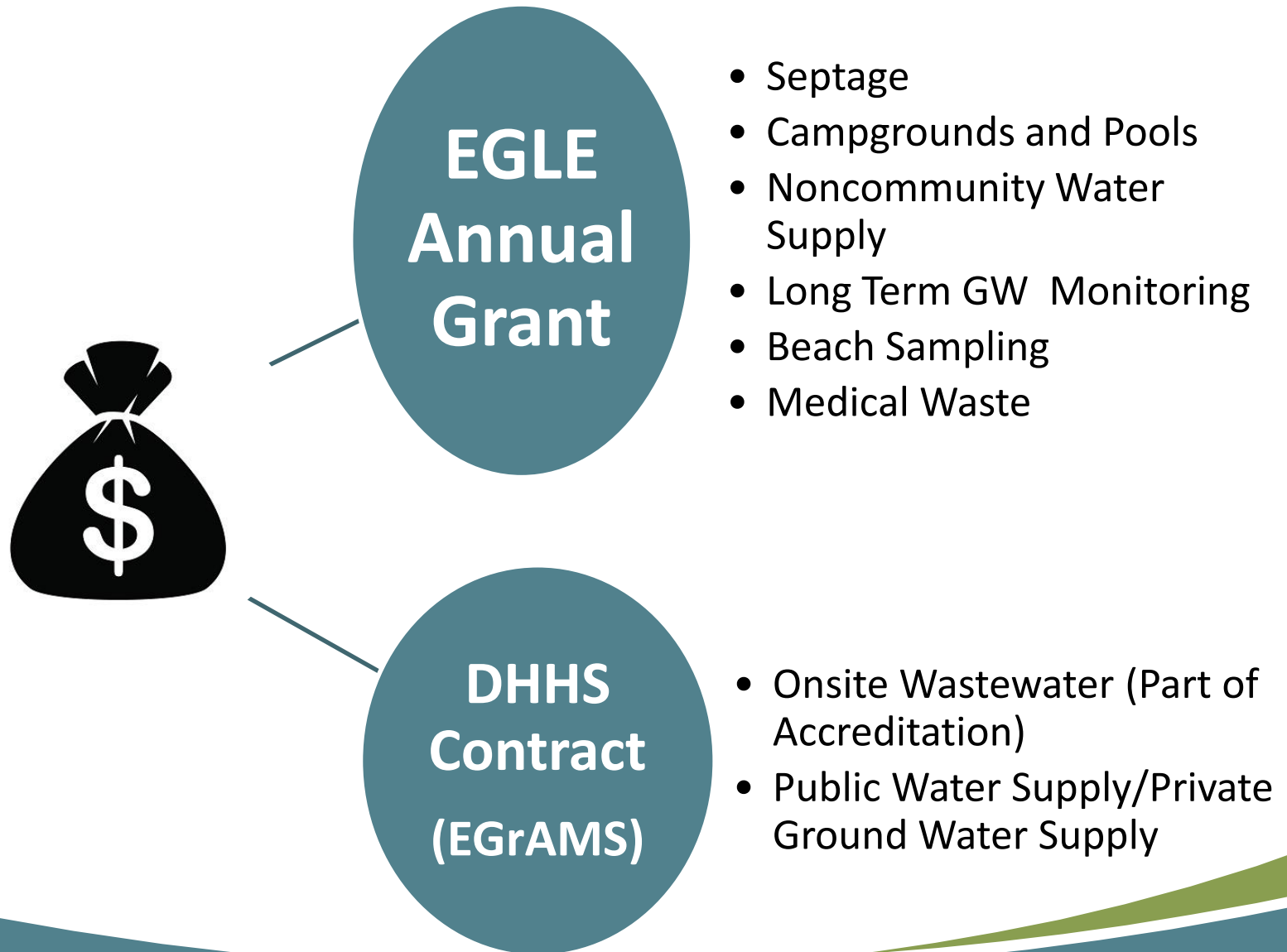
**SOME
Programs**

Evaluate LHD
programs
(MPRs)

Help with
escalated
enforcement

Plan Review
registration/
license

Funding for Local Health



SOURCE WATER UNIT

Well Construction Program

(Part 127 of Act 368)

LHD Role:

- ✓ Issue water well construction permits
- ✓ Inspect water wells
- ✓ Ensure water wells meet well code and permit requirements
- ✓ Conduct contractor enforcement, if needed
- ✓ MPRs 5-7



SOURCE WATER UNIT

Contamination Investigation Program



LHD Role:

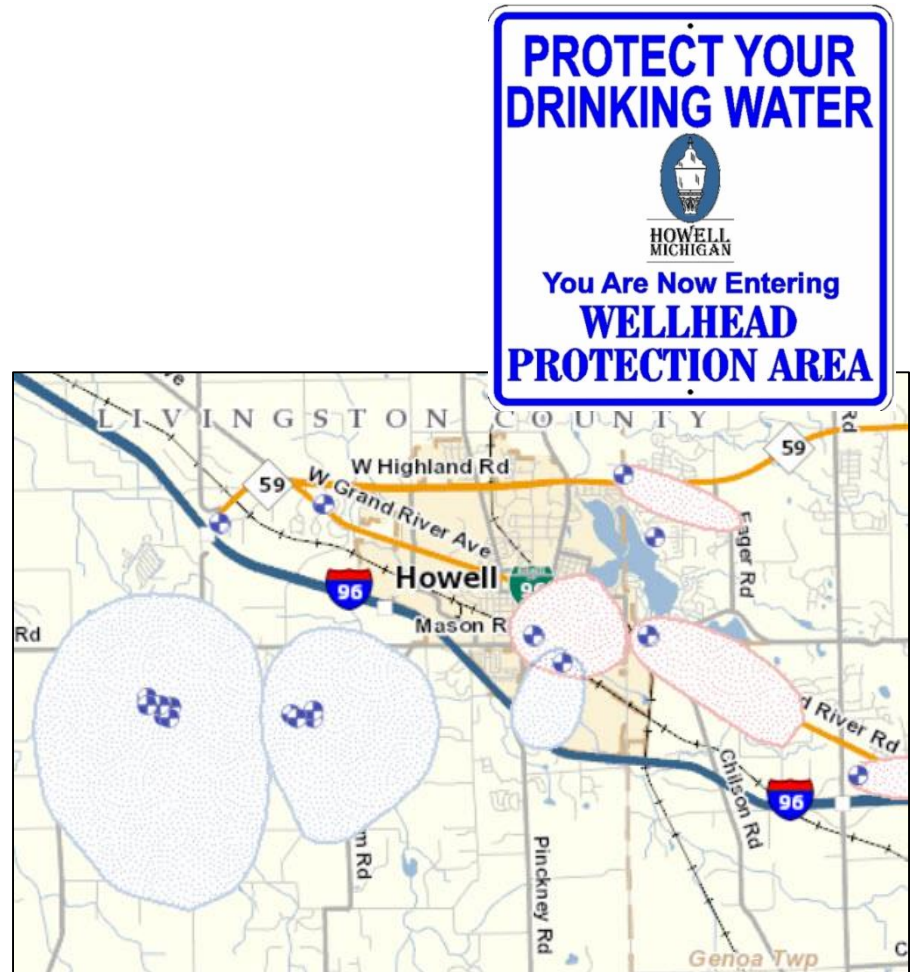
- ✓ Collect samples for groundwater contamination investigations
- ✓ Assist with obtaining alternate water sources
- ✓ Collaborate with RRD
- ✓ Educate the public on water quality concerns

SOURCE WATER UNIT

Source Water Program

LHD Role:

- ✓ Conduct source water assessments on Nontransient Noncommunity water supplies



NONCOMMUNITY WATER SUPPLIES UNIT

(Part 127 of Act 368 and Act 399)



LHD Role:

- ✓ Conduct sanitary surveys
- ✓ Ensure Federal monitoring requirements are being met
- ✓ Issue water well construction permits
- ✓ Inspect water wells
- ✓ MPRs 1-4

ENVIRONMENTAL HEALTH PROGRAMS UNIT

Onsite Wastewater Program

(Local Sanitary Codes, Act 59, Act 288, Act 368)

LHD Role:

- ✓ Issue onsite wastewater construction permits (<10,000 GPD)
- ✓ Inspect newly installed systems
- ✓ Evaluate vacant property
- ✓ Conduct plat review
- ✓ Investigate sewage related complaints



ENVIRONMENTAL HEALTH PROGRAMS UNIT

Septage Program

(Part 117 of Act 451)



LHD Role:

- ✓ Inspect septage pumping vehicles
- ✓ Inspect septage waste receiving facilities
- ✓ Inspect septage land applications sites
- ✓ Investigate complaints

ENVIRONMENTAL HEALTH PROGRAMS UNIT

Campground Program

(Part 125 Act 368)



LHD Role:

- ✓ Inspect campgrounds annually
- ✓ Inspect temporary campgrounds

ENVIRONMENTAL HEALTH PROGRAMS UNIT

Swimming Pool Program

(Act 368)

LHD Role:

- ✓ Inspect public swimming pools
- ✓ Review monthly operational reports



Timelines/Responsibilities

LHDs submit program reports and/or requests for payment

- ☐ Private and Type III Water Supplies
- ☐ [Onsite Wastewater](#)
- ☐ Noncommunity Water Supplies
- ☐ Contamination Investigation

LHDs submit inspection reports

- ☐ Swimming Pools and Campgrounds
- ☐ Septage

Helpful Links

Michigan.gov/DrinkingWater

Michigan.gov/EGLEWaterWellConstruction

Michigan.gov/EGLENoncommunityWaterSupply

Michigan.gov/EGLEOnsiteWastewater

Michigan.gov/EGLESeptage

Michigan.gov/EGLECampgrounds

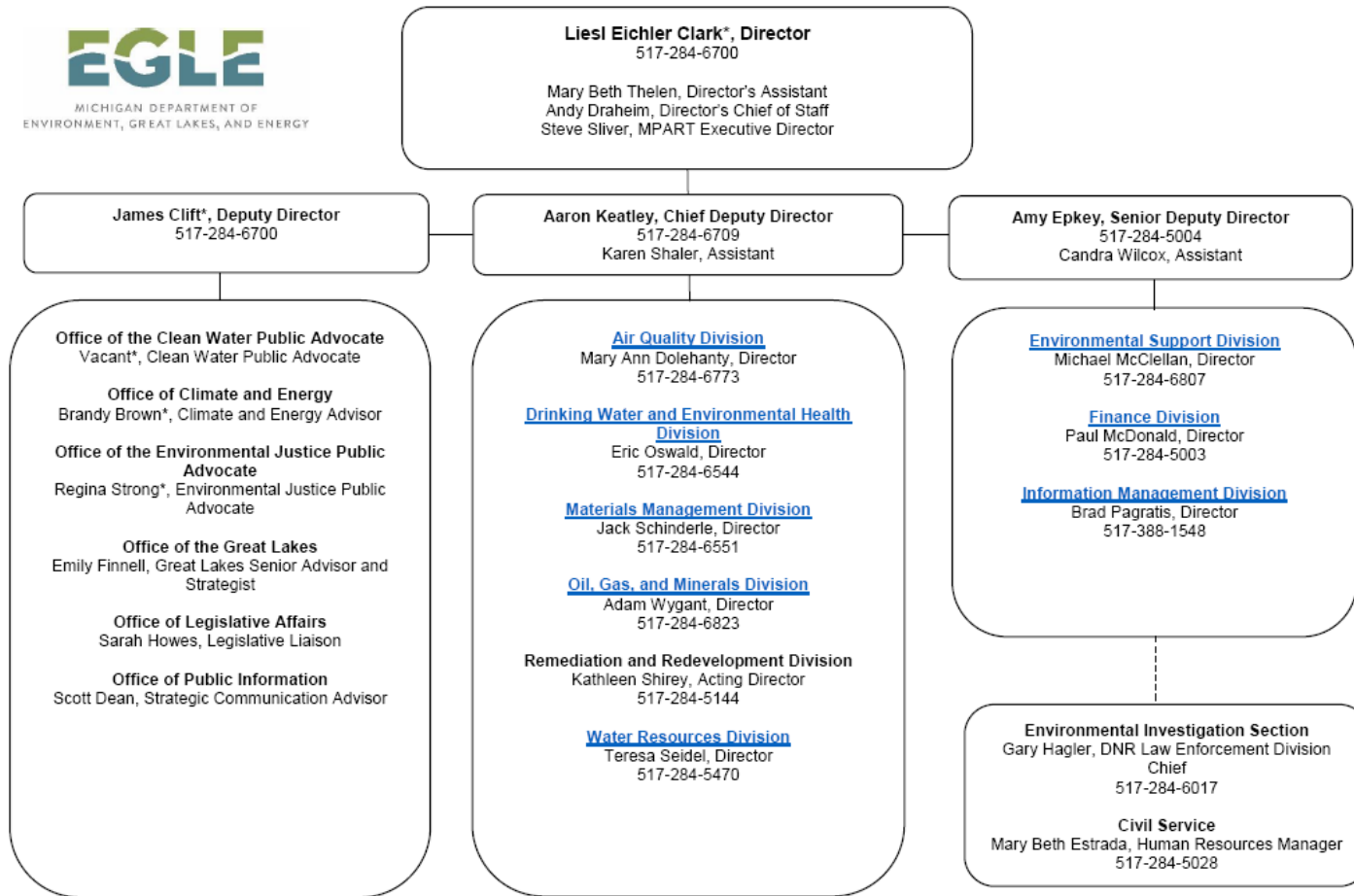
Michigan.gov/EGLEPools

Michigan.gov/PFASResponse

Michigan.gov/EGLELab

EGLE-EH@Michigan.gov – EMAIL

Organizational Structure



*Denotes unclassified positions .

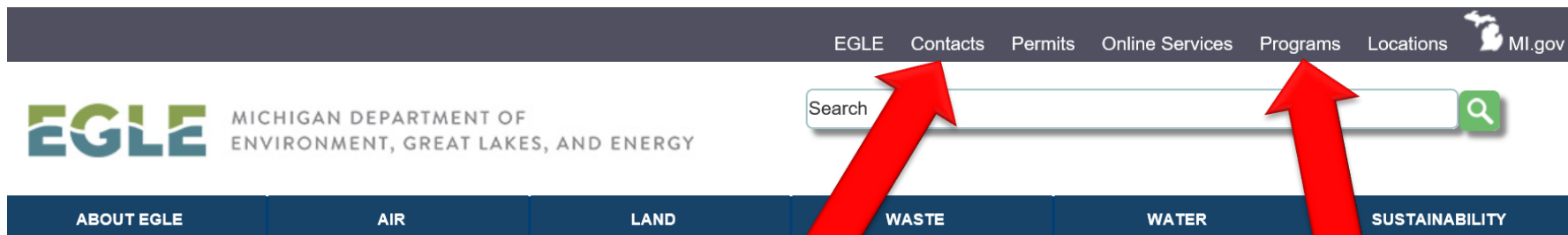
Page 1

July 1, 2019

Examples of other EGLE Programs

- Drinking Water and Environmental Health
 - Community Water Supply (Act 399)
- Water Resources Division
 - Large quantity water withdrawals (Part 327)
 - >10,000 GPD wastewater construction permits (Part 41)
 - Groundwater discharge permits (Part 31)
 - Soil erosion and sedimentation control (Part 91)
- Remediation and Redevelopment Division
 - Contamination sites including vapor intrusion (Part 201 and Part 213)
 - Environmental and Drinking Water Laboratory
- Waste Management and Radiological Protection Division
 - Indoor radon testing
- Emergency Management
- Pollution Emergency Alerting System (PEAS) 1-800-292-4706

EGLE Program Contacts



EGLE Support

Environmental Emergencies

To file an Environmental Complaint call **800-292-4706**.
If you need to report an environmental emergency situation, please dial the 24 hour [Pollution Emergency Alert System \(PEAS\)](#) at: **800-292-4706**.

During daytime hours, you may also [contact the appropriate district office](#) directly.

Report a Spill Release

Programs by Division

[Sort by Division](#) | [Sort Alphabetically](#) | [Sort by Theme](#)

Air Quality Division (AQD)

[Air Compliance](#) 517-582-3063

Email Address: EthridgeC@Michigan.gov

Division Information: [Air Quality Division \(AQD\)](#)

[Air Laws & Rules](#) 517-284-6740

Email Address: DeBrulerC@Michigan.gov

Division Information: [Air Quality Division \(AQD\)](#)

[Air Permits](#) 517-284-6793

Email Address: ShootzL1@Michigan.gov

Division Information: [Air Quality Division \(AQD\)](#)

[Air Toxics](#) 517-284-6763

Email Address: WilliamsK29@Michigan.gov

Division Information: [Air Quality Division \(AQD\)](#)

[Air Toxics Screening Levels](#) 517-284-6753

Email Address: LehnerD@Michigan.gov

Division Information: [Air Quality Division \(AQD\)](#)

[Ambient Monitoring](#) 517-284-6752

Email Address: KilmerS@Michigan.gov

Division Information: [Air Quality Division \(AQD\)](#)

Michigan Department of
Environment, Great Lakes, and Energy

800-662-9278

Michigan.gov/EGLE



Michigan.gov/DrinkingWater