

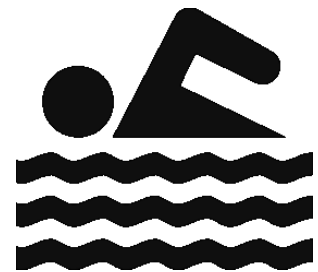
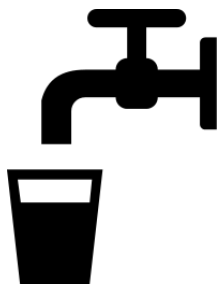
# New Local Health Leader Orientation

## November 2018

---

Jeremy Hoeh P.E.

Environmental Health Programs Unit Supervisor



# **This Presentation Covers**

- Environmental Health (EH)  
Section Structure within the  
Drinking Water & Municipal  
Assistance Division (DWMAD)
- DEQ's Role
- Funding for EH Programs
- LHD's Role
- Timelines & Responsibilities
- EHS Links
- DEQ Contacts

**DWMAD Mission-**  
***Safeguarding Michigan's  
Drinking Water and  
Environmental Health***



**Vision-**  
***Michigan Values and  
Invests in Safe and  
Reliable Water***

# Environmental Health Section



```
graph TD; A[Environmental Health Section] --> B[Source Water Unit]; A --> C[Noncommunity Water Supplies Unit]; A --> D[Environmental Health Programs Unit]; B --> E["Well Construction<br/>Contamination Investigation<br/>Source Water"]; D --> F["Onsite Wastewater<br/>Septage<br/>Swimming Pools<br/>Campgrounds"];
```

The diagram is an organizational chart for the Environmental Health Section. At the top is a blue box labeled 'Environmental Health Section'. Below it is a horizontal black bar. Under this bar are three green boxes: 'Source Water Unit', 'Noncommunity Water Supplies Unit', and 'Environmental Health Programs Unit'. Below the 'Source Water Unit' box is a purple box containing the text 'Well Construction', 'Contamination Investigation', and 'Source Water'. Below the 'Environmental Health Programs Unit' box is a purple box containing the text 'Onsite Wastewater', 'Septage', 'Swimming Pools', and 'Campgrounds'. The 'Noncommunity Water Supplies Unit' box has no sub-units shown.

Source Water  
Unit

Noncommunity  
Water Supplies  
Unit

Environmental  
Health  
Programs Unit

Well Construction  
Contamination  
Investigation  
Source Water

Onsite Wastewater  
Septage  
Swimming Pools  
Campgrounds

DEQ staff are assigned to LHDs for each EH program. DEQ staff:

**ALL  
Programs**

Provide  
technical  
assistance

Help with  
laws/rules  
interpretation

Provide training

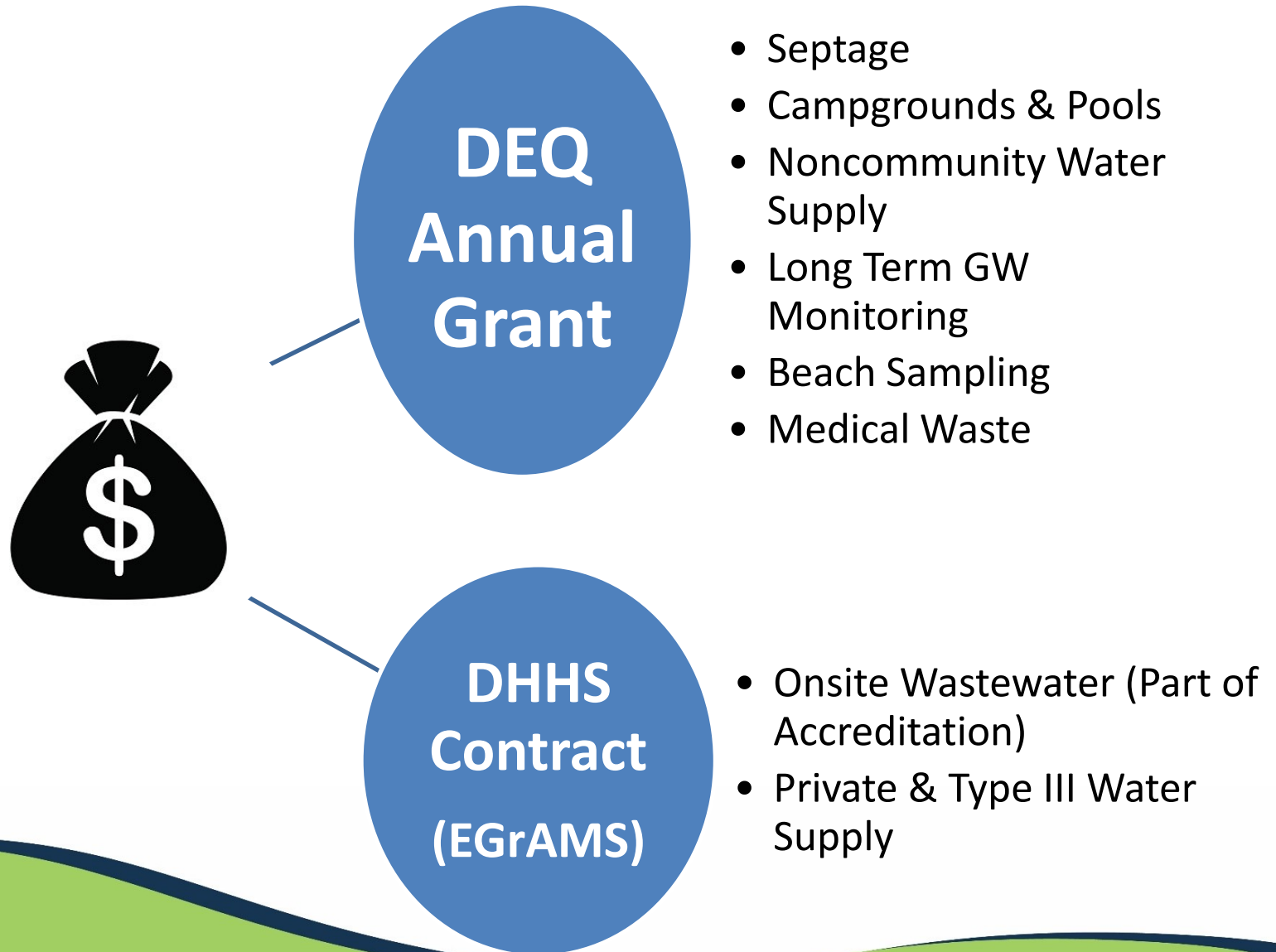
**SOME  
Programs**

Evaluate LHD  
programs  
(MPRs)

Help with  
escalated  
enforcement

Plan Review  
registration/  
license

# Funding for Local Health





# SOURCE WATER UNIT

## Well Construction Program

(Part 127 of Act 368)

### LHD Role:

- ✓ Issue water well construction permits
- ✓ Inspect water wells
- ✓ Ensure water wells meet well code and permit requirements
- ✓ Conduct contractor enforcement, if needed
- ✓ MPRs 5-7



# SOURCE WATER UNIT

## Contamination Investigation Program



### LHD Role:

- ✓ Collect samples for groundwater contamination investigations
- ✓ Assist with obtaining alternate water sources
- ✓ Collaborate with RRD
- ✓ Educate the public on water quality concerns



# SOURCE WATER UNIT

## Source Water Program

LHD Role:

- ✓ Conduct source water assessments on Nontransient Noncommunity water supplies



# NONCOMMUNITY WATER SUPPLIES UNIT

(Part 127 of Act 368 & Act 399)



## LHD Role:

- ✓ Conduct sanitary surveys
- ✓ Ensure Federal monitoring requirements are being met
- ✓ Issue water well construction permits
- ✓ Inspect water wells
- ✓ MPRs 1-4

# ENVIRONMENTAL HEALTH PROGRAMS UNIT

## **Onsite Wastewater Program**

(Local Sanitary Codes, Act 59, Act 288, Act 368)

### LHD Role:

- ✓ Issue onsite wastewater construction permits (<10,000 GPD)
- ✓ Inspect newly installed systems
- ✓ Evaluate vacant property
- ✓ Conduct plat review
- ✓ Investigate sewage related complaints





# ENVIRONMENTAL HEALTH PROGRAMS UNIT

## Septage Program

(Part 117 of Act 451)



### LHD Role:

- ✓ Inspect septage pumping vehicles
- ✓ Inspect septage waste receiving facilities
- ✓ Inspect septage land applications sites
- ✓ Investigate complaints

# ENVIRONMENTAL HEALTH PROGRAMS UNIT

## Campground Program

(Part 125 Act 368)



LHD Role:

- ✓ Inspect campgrounds annually
- ✓ Inspect temporary campgrounds



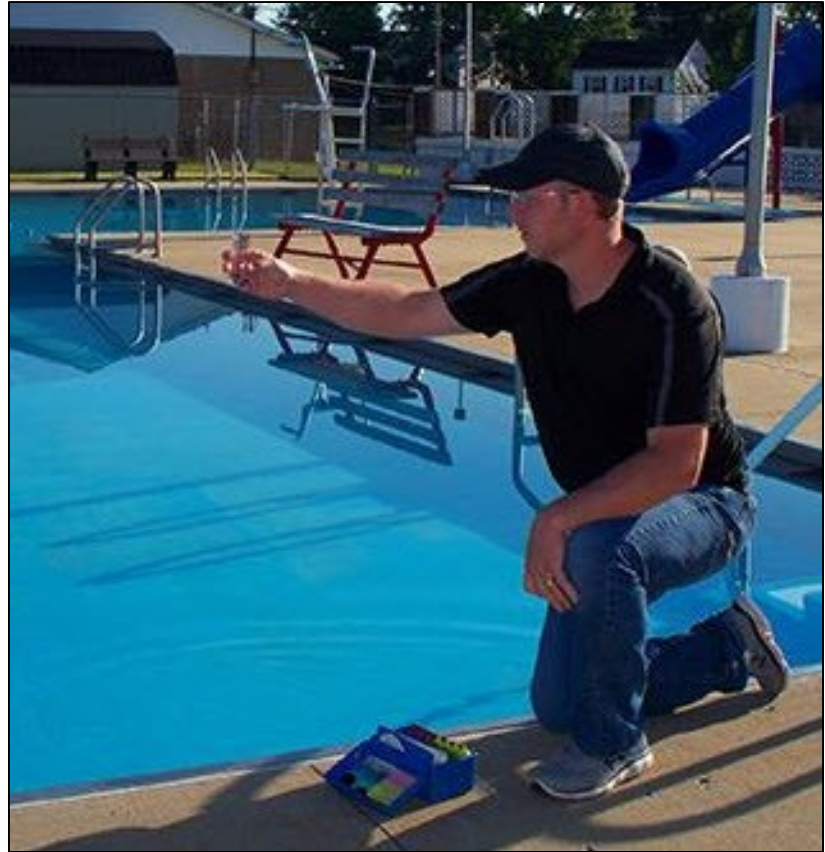
# ENVIRONMENTAL HEALTH PROGRAMS UNIT

## Swimming Pool Program

(Act 368)

LHD Role:

- ✓ Inspect public swimming pools
- ✓ Review monthly operational reports



# Timelines/Responsibilities

LHDs submit program reports and/or requests for payment

- ☐ Private & Type III Water Supplies
- ☐ [Onsite Wastewater](#)
- ☐ Noncommunity Water Supplies
- ☐ Contamination Investigation

LHDs submit inspection reports

- ☐ Swimming Pools & Campgrounds
- ☐ Septage

# Helpful Links

[www.michigan.gov/drinkingwater](http://www.michigan.gov/drinkingwater)

[www.michigan.gov/deqwaterwellconstruction](http://www.michigan.gov/deqwaterwellconstruction)

[www.michigan.gov/deqnoncommunitywatersupply](http://www.michigan.gov/deqnoncommunitywatersupply)

[www.michigan.gov/deqonsitewastewater](http://www.michigan.gov/deqonsitewastewater)

[www.michigan.gov/deqseptage](http://www.michigan.gov/deqseptage)

[www.michigan.gov/deqcampgrounds](http://www.michigan.gov/deqcampgrounds)

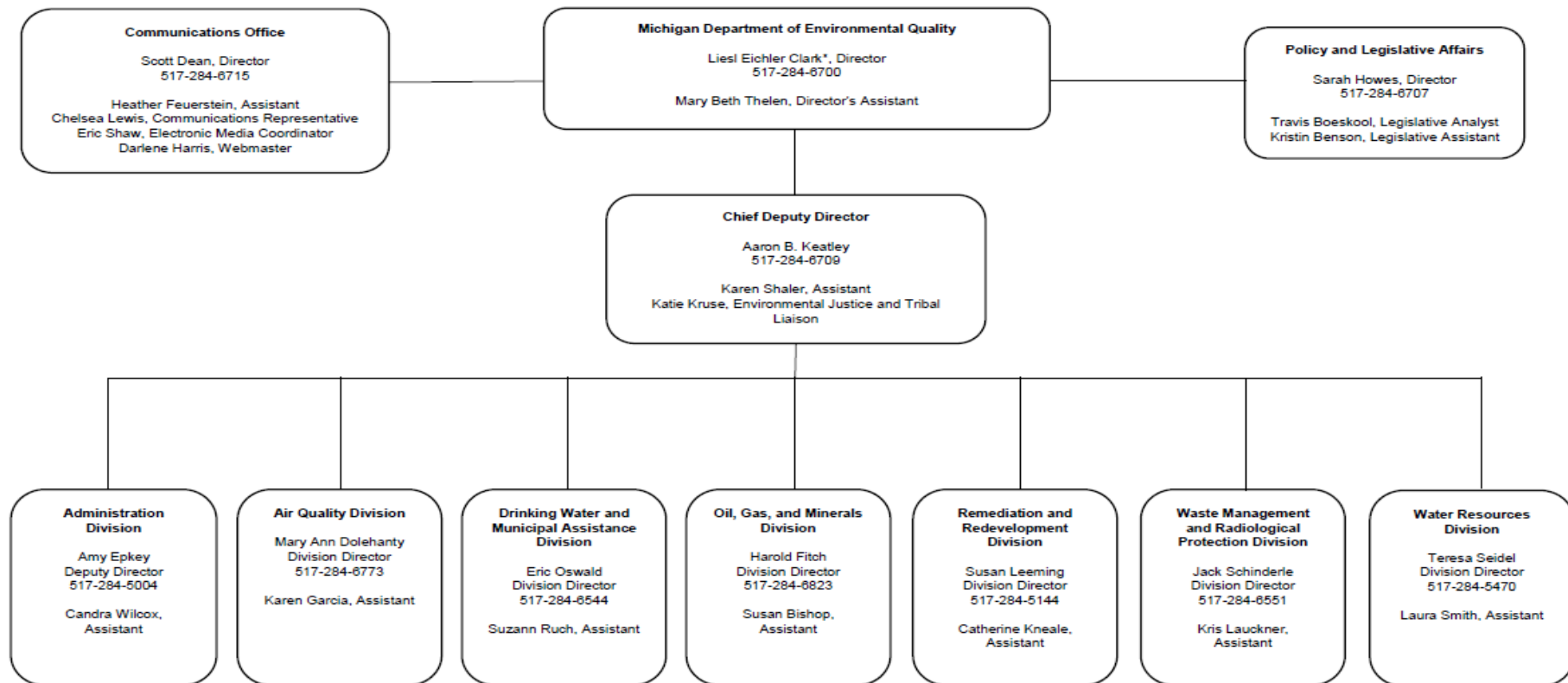
[www.michigan.gov/deqpools](http://www.michigan.gov/deqpools)

[www.michigan.gov/pfasresponse](http://www.michigan.gov/pfasresponse)

[www.michigan.gov/deqlab](http://www.michigan.gov/deqlab)

[DEQ-EH@michigan.gov](mailto:DEQ-EH@michigan.gov) – EMAIL

# DEQ Organizational Structure



\*Denotes unclassified positions



# Examples of other DEQ Programs

- Drinking Water and Municipal Assistance
  - Community Water Supply (Act 399)
- Water Resources Division
  - Large quantity water withdrawals (Part 327)
  - >10,000 GPD wastewater construction permits (Part 41)
  - Groundwater discharge permits (Part 31)
  - Soil erosion & sedimentation control (Part 91)
- Remediation & Redevelopment Division
  - Contamination sites including vapor intrusion (Part 201 & Part 213)
  - Environmental and Drinking Water Laboratory
- Waste Management & Radiological Protection Division
  - Indoor radon testing
- Emergency Management
- Pollution Emergency Alerting System (PEAS) 1-800-292-4706



# DEQ Program Contacts



## DEQ Support

### Environmental Emergencies

To file an Environmental Complaint call **800-292-4706**

If you need to report an environmental emergency situation,

System (PEAS) at:

**800-292-4706**

During daytime hours, you may also contact the appropriate

[Report a Spill Release](#)

## Programs by Division

[Sort by Division](#) | [Sort Alphabetically](#) | [Sort by Theme](#)

### Air Quality Division (AQD)

[Air Laws & Rules](#) 517-284-6740

Email Address: [debrulerc@michigan.gov](mailto:debrulerc@michigan.gov)

Division Information: [Air Quality Division \(AQD\)](#)

[Air Permits](#) 517-284-6793

Email Address: [shootz1@michigan.gov](mailto:shootz1@michigan.gov)

Division Information: [Air Quality Division \(AQD\)](#)

[Air Toxics](#) 517-284-6763

Email Address: [sillsr@michigan.gov](mailto:sillsr@michigan.gov)

Division Information: [Air Quality Division \(AQD\)](#)

[Air Toxics Screening Levels](#) 517-284-6753

Email Address: [lehnerd@michigan.gov](mailto:lehnerd@michigan.gov)

Division Information: [Air Quality Division \(AQD\)](#)

[Ambient Monitoring](#) 517-284-6752

Email Address: [kilmers@michigan.gov](mailto:kilmers@michigan.gov)

Division Information: [Air Quality Division \(AQD\)](#)



# Michigan.gov/drinkingwater

---