

Environmental Health Bureau



Environmental Health Bureau Organization Structure

MDHHS Mission

MDHHS provides opportunities, services, and programs that promote a healthy, safe, and stable environment for residents to be self-sufficient.

MDHHS Vision

Develop and encourage measurable health, safety, and self-sufficiency outcomes that reduce and prevent risks, promote equity, foster healthy habits, and transform the health and human services system to improve the lives of Michigan families.

EHB Goal

Apply the best available science to end or prevent injury from environmental, chemical, and physical hazards, and promote equity for the people of Michigan.

Directors

Environmental Health Bureau Director

- Kory Groetsch
- groetschk@michigan.gov
- 517-284-4804



Divisions & Sections

[BUREAU OPERATIONS OFFICE](#)
Division Director: Michelle Chambers

[FINANCIAL SERVICES OFFICE](#)
Division Director: Hope Bartlett

[DIVISION OF TOXICOLOGY & RESPONSE](#)
Division Director: Mandy Paust

Toxicology & Assessment
Jordan Bailey

Community Education & Outreach
Chris Finch

Chemical Planning & Response
Gerald Tiernan

[DIVISION OF EPIDEMIOLOGY, DATA ANALYTICS & EVALUATION](#)
Division Director: Betsy Wasilevich

Enviro Epidemiology & Analytics
Anthony Oliveri

Enviro Health Surveillance
Tom Largo

Biomonitoring, Epidemiology and Response
Melissa Millerick-May

[DIVISION OF ENVIRONMENTAL COMMUNITY SERVICES](#)
Division Director: Carin Speidel

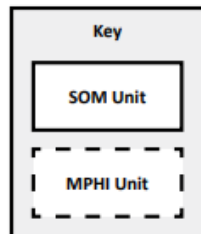
Lead Certification & Compliance Assurance
Jennifer Shutts

Residential Environmental Services
Chad Rhodes

Care Coordination
Angela Medina

Emergency Contacts

Environmental Health Incident/Emergency	Gerald Tiernan	517-388-7471
	Lisa Quiggle	517-582-5868
	MITOX Hotline	800-648-6942
Need Assistance and Don't Know Who to Call?	EHB operators can quickly connect you to an Environmental Health Subject Matter Expert	800-648-6942
Outside of State Business Hours: M-F 8AM to 5PM	MDHHS On – Call	517-335-9030



Public Health Administration
Dr. Sarah Lyon-Callo - Senior Deputy Director-20

Financial Services Office
Hope Bartlett - Division Director
State Division Administrator-17

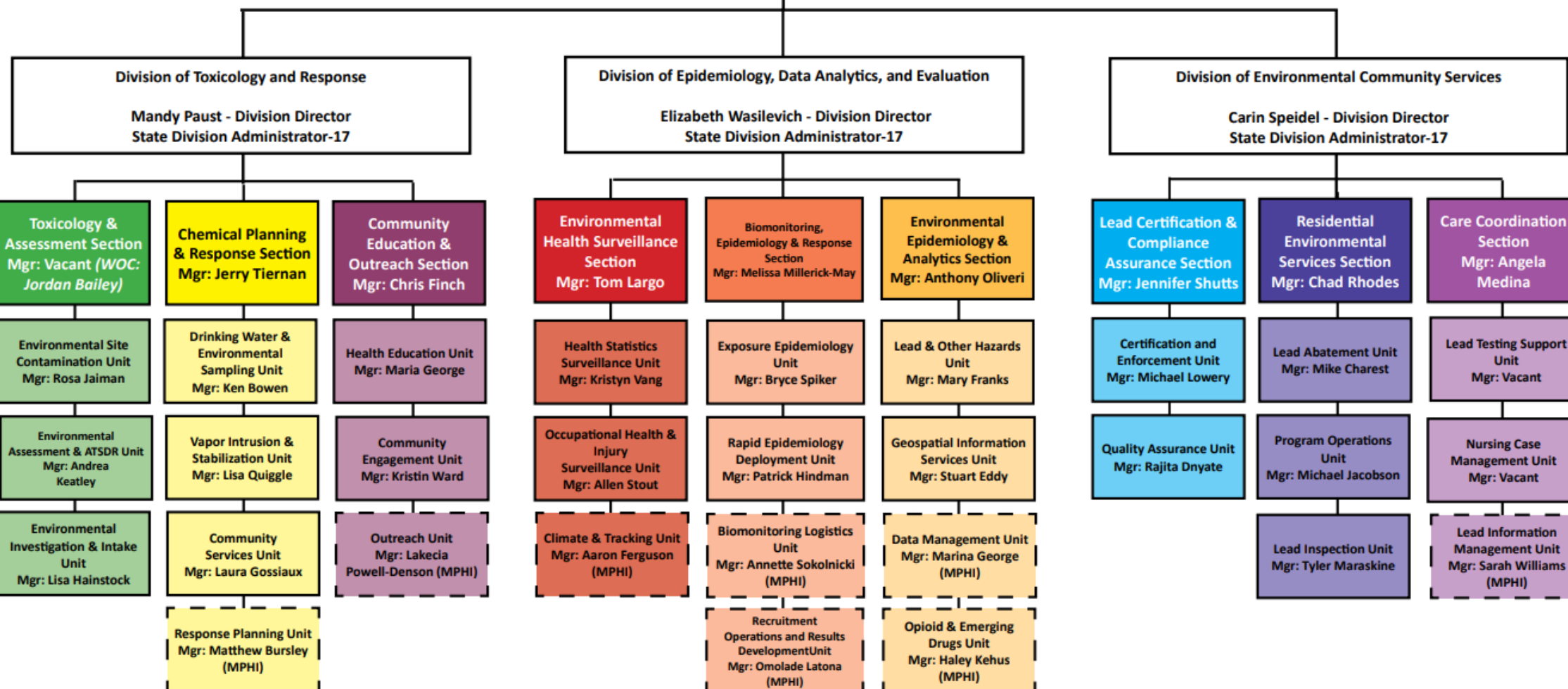
Budget
Contracts and Grants

Environmental Health Bureau
Kory Groetsch - State Bureau Administrator-18

Jacqui Barr - Bureau Secretary
Executive Secretary-1A

Bureau Operations Office
Michelle Chambers - Division Director
State Division Administrator-17

Office of Science and Consultation
Office of Strategy
Operations and Engagement Section



Division of Environmental Community Services		
Section	Description	Manager
Care Coordination Section (CCS)	The Care Coordination Section is responsible for administration of child case management and family support services to address lead exposure prevention and response. This section includes the following: Nursing Case Management Unit, Lead Testing Support Unit, and Lead Information Management Unit.	Angela Medina medinaa@michigan.gov 517-897-5203
Lead Certification and Compliance Assurance Section (LCCA)	The purpose of the Lead Certification and Compliance Assurance Section is to protect public health through lead-based paint training, certification and regulatory compliance while ensuring internal quality standards.	Jennifer Shutts shuttsj@michigan.gov 517-599-7297
Residential Environmental Services Section (RESS)	The Residential Environmental Services Section is responsible for administration of home lead exposure prevention safety net programs. This section includes the Lead Abatement Unit, the Lead Inspection unit, and the Program Operations Unit.	Chad Rhodes rhodesc2@michigan.gov 517-599-6737

Division of Epidemiology, Data Analytics, and Evaluation		
Section	Description	Manager
Biomonitoring, Epidemiology and Response Section (BEaRS)	Collects and assesses exposure and biomonitoring (blood and urine) data for the purpose of identifying risk factors for, and confirming human exposure to, environmental contaminants. Findings from research and surveillance projects and programs (MiChEM) serve to inform statewide initiatives and response activities. Operates the Emerging Health Threats program responding to non-infectious disease outbreaks and supports site emergency response efforts.	Melissa Millerick-May millerickmaym@michigan.gov 517-388-8275
Environmental Epidemiology and Analytics Section (EEA)	Provides critical epidemiological support to surveil, identify, and respond to opportunities for public health interventions regarding opioids, emerging drugs and lead in children, water, and homes. This section also manages data and provides geospatial and visual analytics for EHB.	Anthony Oliveri oliveria1@michigan.gov 517-648-5624
Environmental Health Surveillance Section (EHS)	Develops, maintains, and analyzes surveillance data on health issues related to environmental and occupational exposures. Utilizes data to identify need for intervention. The section’s Michigan Environmental Health Tracking (MiTracking) Program makes a wide variety of environmental data available to the public through its data query system, such as, air quality, community public drinking water, climate change, and lead exposure.	Tom Largo largot@michigan.gov 517-284-4806

Division of Toxicology and Response		
Section	Description	Manager
Chemical Planning and Response Section (CPRS)	Carries out much of the on-site work for EHB, including both environmental sampling and community services (filter distribution, etc.). The section provides support to local, state, and federal partners in the event of public environmental health disasters, like oil spills and other hazardous chemical releases.	Gerald Tiernan tiernang@michigan.gov 517-388-7471
Community Education and Outreach Section (CEO)	Supports EHB in the areas of health education, community outreach, and engagement services. Centralizing communication activities in the section ensures consistent application of the best available social science and public health practices throughout EHB with the goal of informing residents of actions that can be taken to prevent or limit exposures to environmental hazards.	Chris Finch finchc2@michigan.gov 517-285-7323
Toxicology and Assessment Section (TAS)	Supports EHB activities with expertise in toxicology and risk assessment. The section’s work includes assessing and making public health determinations for Superfund sites, PFAS sites, and other sites with environmental contamination.	Jordan Bailey baileyj17@michigan.gov

Environmental Health Bureau Framework

Identify

Investigate

Intervene



Environmental Health Assistance



Air



Community



Food



Water



Soil



Home



Environmental
Health Threats
Response

Lead Exposure
Response
Assistance

PFAS Response
Program

Harmful Algae
Bloom (HABS)
Program

Mercury & Health
Program

Eat Safe Fish and
Wild Game
Program

MI Environmental
Public Health
Tracking
(MiTracking)

MI Climate &
Health
Adaptation
Program

Biomonitoring
and PFAS Health
Studies

Care for MI
Drinking Water
Program

Environmental
Health for Health
Care Providers

Regional Community Model



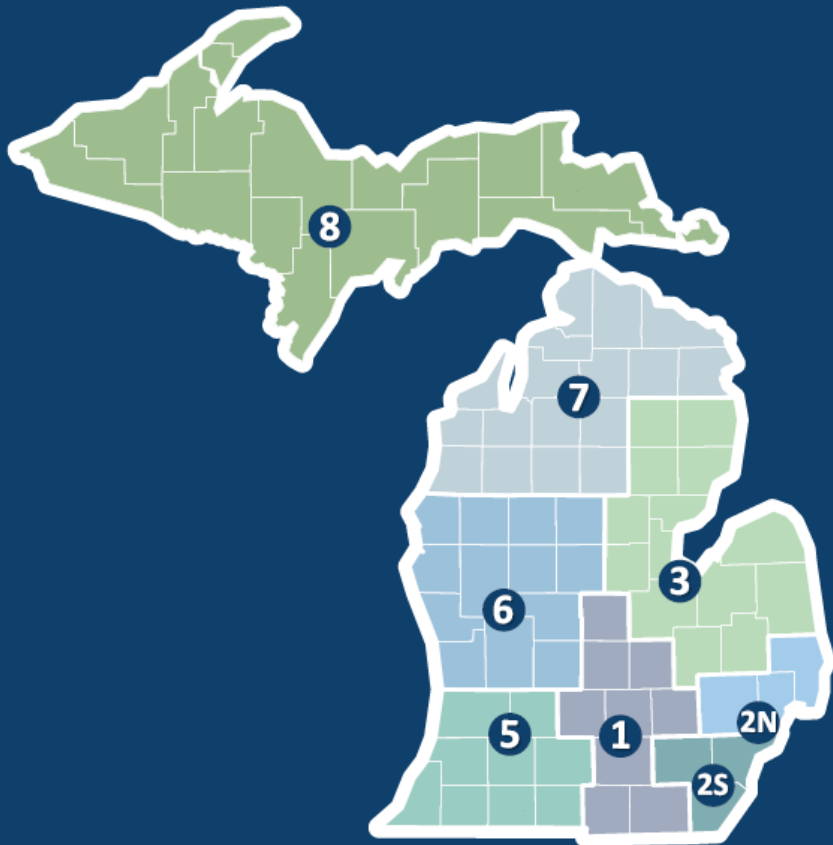
Purpose

- To be proactive in raising awareness and educating Michiganders about potential health hazards in the places where we live, work, and play.

Benefits

- EHB is committed to identifying potential health hazards, investigating health effects, and intervening with education and action.
- By regionalizing our community engagement and outreach teams, we build networks of relationships to grow trust within communities, which will support our efforts to share public health recommendations.
- Reducing racial and ethnic health disparities is an “all-hands-on-deck” effort. Earning the trust of community members through regional engagement and outreach prompts feedback that helps us properly direct resources toward reducing health disparities.

Regional Community Model



Strategies

- Conversations and presentations virtually and in-person.
- Brainstorming sessions to find opportunities to support one another to help protect the health of the community.
- Existing activities EHB messaging can easily be included (ex: listservs, mailings).
- Identifying new opportunities (ex: learning demonstrations).
- Giving back to the community (volunteering).

Regions

- Geographic regions are based on existing Michigan Emergency Preparedness regions.
- Regional Team includes Regional Community Engagement Coordinators and Regional Outreach Technicians.
- Team members live in, work in, or have a personal connection with the regions they serve.

As liaisons between MDHHS-EHB and local organizations, we strive to:



Work with regional collaborators to supplement on-going local efforts to promote and protect the health of the community.



Identify opportunities to engage the community and local organization in relevant EHB programs.



Create opportunities for the community and local organizations to provide feedback about local EHB initiatives.

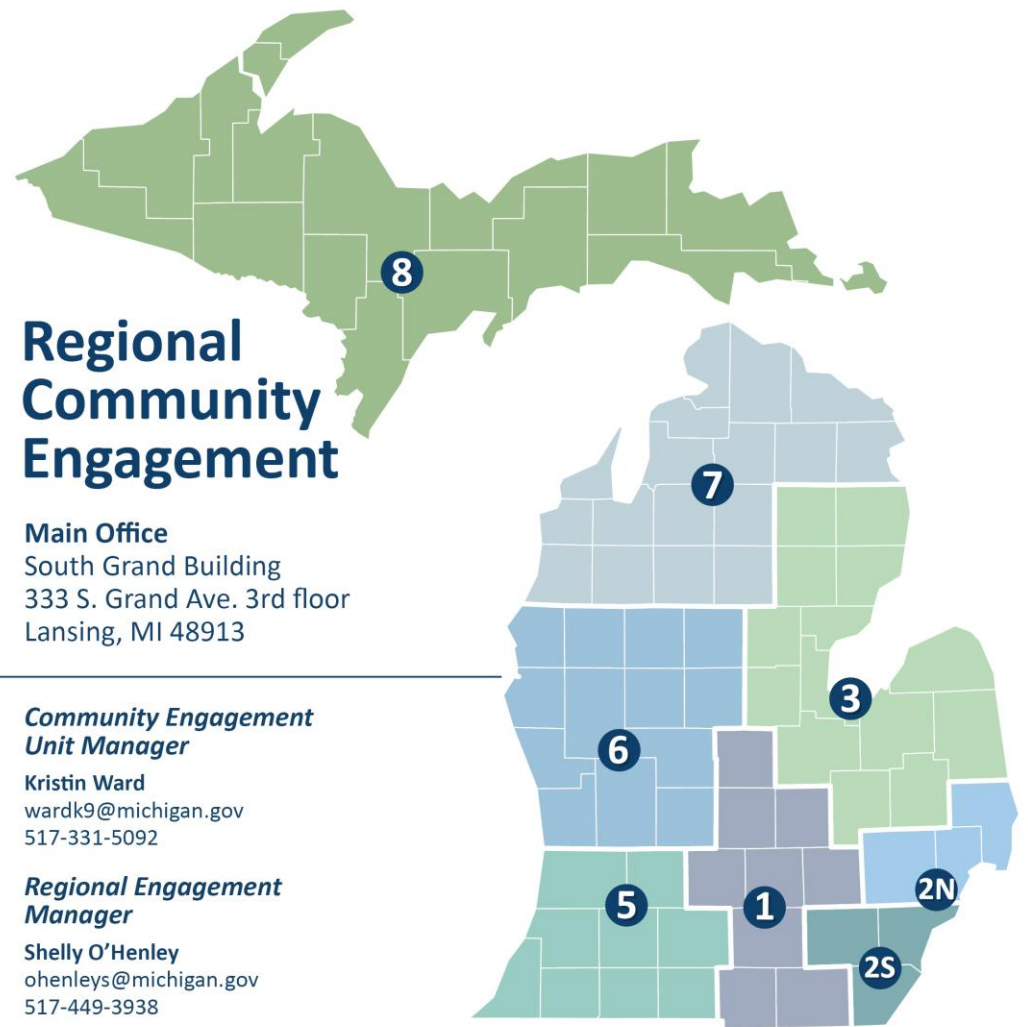


Keep communities updated about emerging EHB resources and opportunities.



Communicate local environmental emergencies and work with local partners to coordinate response.

Regional Community Engagement Coordinators



- | | | |
|-----------|---|--|
| 1 |  | Ashley Mark
marka@michigan.gov
517-582-2877 |
| 2N |  | Lauren Payton
paytonl1@michigan.gov
517-243-8787 |
| 2S |  | Madison Whitaker
whitakerm4@michigan.gov
517-290-4006 |
| 3 |  | Hannah Theodorovich
theodorovichh@michigan.gov
517-449-3938 |

- | | | |
|----------|---|---|
| 5 |  | Spence Adams
adamss32@michigan.gov
517-285-0538 |
| 6 |  | Brittany Pazdan
pazdanb1@michigan.gov
517-897-2926 |
| 7 |  | Madelyn Slamka
slamkam@michigan.gov
517-243-7563 |
| 8 |  | Trevor Quinlan
quinlant2@michigan.gov
517-243-5738 |

Environmental Health Bureau Programs and Projects



Program/Project	Description	Manager/Coordinator
Advancing Violence Epidemiology in Real-Time (AVERT) Project	AVERT utilizes near real-time emergency department data to quickly measure the incidence of non-fatal violence in Michigan communities. Information is provided to partners in violence prevention to assist them in designing targeted interventions.	Allen Stout StoutA4@michigan.gov 517-582-2295
Air Contaminate and Vapor Intrusion Program	The ACVIP works to assess and mitigate the impact of air pollution on public health. Its primary goal is to reduce or eliminate exposures to harmful air pollutants that can negatively affect human health. The program focuses on identifying air contaminants, tracking exposure levels, conducting health risk assessments, and implementing strategies to protect communities from the adverse effects of air pollution. The program has 4 major focus areas: indoor air pollutants (including mercury response), point source and ambient air pollutants, climate and tracking (wildfire smoke), and vapor intrusion to indoor air.	Gerald Tiernan tiernang@michigan.gov 517-388-7471
ATSDR Site Assessment Program	The Environmental Assessment and Site Assessment Program works under a cooperative agreement with the CDC Agency for Toxic Substances and Disease Registry (ATSDR) to complete health assessments of National Priority Listing (Superfund) sites in Michigan and other sites of contamination.	Andrea Keatley keatleya1@michigan.gov 517-284-1273
Cancer Incidence Investigations	This program identifies and investigates unusual patterns of cancer in a-sub-county areas that may be associated with environmental exposures. This work is typically performed in response to public concerns.	Katie Patterson pattersonk9@michigan.gov

Program/Project	Description	Manager/Coordinator
Carbon Monoxide Poisoning Surveillance Program	The program conducts surveillance of unintentional carbon monoxide (CO) poisonings in Michigan. It utilizes multiple sources such as emergency department records, death certificates, poison control center calls, and EMS runs to identify cases. The surveillance activities provide enhanced data that are used in CO poisoning prevention work conducted by MDHHS and other state agencies.	Ali Bianco BiancoA@michigan.gov (517) 231-5959
Childhood Lead Poisoning Prevention Program (CLPPP)	Oversight of health services for children with elevated blood lead levels and those at risk of lead poisoning, including nursing case management, technical assistance to local health departments, support to partners for blood lead testing, blood lead test result surveillance and data sharing.	Rachel Melody melodyr2@michigan.gov 517-284-0053
Clandestine Drug Lab Cleanup (CDL) Program	The Clandestine Drug Lab Cleanup Program helps provide guidance to property owners to cleanup residential properties that are contaminated with manufacturing of illicit drugs in State of Michigan. The manufacture of illicit drugs results in the release of chemicals and the drug itself into the indoor air and pose human health hazard. The program team also provides technical assistance to local health departments upon request by providing current scientific information to cleanup contaminated residential properties.	Andrea Keatley keatleya1@michigan.gov 517-284-0246

Program/Project	Description	Manager/Coordinator
Drug Overdose Surveillance Program	This program develops, maintains, and analyzes drug overdose surveillance data to inform policy and programmatic efforts. This work also includes identifying, investigating, and responding to abnormal overdose events.	Haley Kehus KehusH@michigan.gov 517-331-5300
Eat Safe Fish (ESF) Program	The Eat Safe Fish Program educates anglers and residents about the risks that come from chemicals found in the environment that end up in the fish. The program aims to make Michiganders feel empowered and informed when making choices about the fish they consume.	Karly Brown brownk80@michigan.gov 517-335-8350
Environmental Health Education for Health Care Providers	The environmental health for health care providers program is aimed at increasing connection and alignment between public health and health care, providing support in incorporating environmental health into patient care, and increasing health care provider knowledge of environmental hazards and contaminants.	Lakecia Powell-Denson powelldensonl@michigan.gov 517-275-2027
Faucet Filter Safety Net	Part of the Get Ahead of Lead strategy, the Faucet Filter Safety Net Program provides for the replacement of one pre-2014 faucet within the home with a new faucet and a lead-reducing point of use (POU) filter and ongoing replacement cartridges to qualified households that within a designated Faucet Filter Safety Net community and includes children and/or pregnant persons enrolled in Medicaid.	Jeremy Waechter waechterj@michigan.gov 517-243-5074

Program/Project	Description	Manager/Coordinator
Filter Safety Net	Part of the Get Ahead of Lead strategy, the Filter Safety Net program provides a lead-reducing point of use (POU) filter and ongoing replacement cartridges to households that are part of the designated Filter Safety Net communities and include children and/or pregnant persons enrolled in Medicaid.	Laura Gossiaux gossiauxl@michigan.gov 517-290-9849
Foster Care Lead Filter Assurance Program	The goal of this program is to further protect foster care children residing within residential, non-facility-based homes within the State of Michigan from the harmful effects of lead in drinking water. This goal will be accomplished by reaching out to all residential, non-facility based foster care providers in the state, including providers that have previously received a filter through EHB-supported programs, to offer filters and replacement cartridges to them. Filters and cartridges will be offered to providers that meet the GAOl eligibility criteria.	Madilyn Donaghy mdonaghy@michigan.gov 517-388-7429
Harmful Algal Blooms (HABs) Program	The recreational harmful algal blooms (HABs) program aims to protect the public from risks associated with recreational exposures to cyanobacteria and their toxins in Michigan waterbodies.	Alex Rafalski rafalskia@michigan.gov 517-881-1046
Home Lead Services Program	The Home Lead Services Program helps families identify and remove lead hazards from homes through a variety of services including lead inspections, lead abatement and navigation of services. To qualify for services, eligibility is based on submitting a complete lead services application, Medicaid or household income status, and home location. Additionally, this Program includes grants to communities to administer local lead hazard control programs.	Michael Jacobson JacobsonM@michigan.gov 517-643-2346 Mike Charest CharestM@michigan.gov 517-599-6431

Program/Project	Description	Manager/Coordinator
Lead Certification Program	Issues accreditation and certification to individuals interested in teaching lead abatement courses and becoming certified to conduct lead abatement investigations and activities. Program issues scholarships for lead abatement training as funding allows and publishes a public list for hiring certified professionals/firms, training course, and examination information.	Jennifer Shutts Shuttsj@michigan.gov 517-599-7297 Michael Lowery LoweryM4@michigan.gov 517-897-0955
Lead Enforcement Program	Oversees lead abatement and renovation education activities performed under the Public Health Code, Lead Abatement Act, and Lead Hazard Control Rules. A strong focus remains on education and coaching to improve compliance amongst the regulated community and maintain transparency for legal expectations. Program oversees X-Ray Fluorescence device inventory and maintenance. Program contains XRF devices that local health departments can loan to perform lead-based paint investigations.	Jennifer Shutts Shuttsj@michigan.gov 517-599-7297 Michael Lowery LoweryM4@michigan.gov 517-897-0955
Lead Inspection Program	Provides a free home lead inspection to homes where children or pregnant persons reside in a community who is or has experienced an action level exceedance for lead in their drinking water supply OR where children under six years of age reside with an elevated blood lead level.	Tyler Maraskine MaraskineT@michigan.gov 517-335-8152
Lead Poisoning Prevention Funds (LPPF)	The Lead Poisoning Prevention Fund was created to fill a critical gap for homeowners and income property owners who don't qualify for free MDHHS lead abatement services. The fund offers low-interest loan opportunities up to \$50,000 for state-wide individuals who are interested in having lead abatement work completed on their properties.	Imoni Williams Williamsl4@michigan.gov 517-331-7536

Program/Project	Description	Manager/Coordinator
Lead Soil Shop	This program conducts lead soil shops as part of various community events across Michigan each year. The program provides real-time lead in soil results (parts per million) from soils sampled by residences and brought to our event. Residences can also obtain educational and gardening materials related to reducing exposure to lead in soils.	Jeremy Waechter waechterj@michigan.gov 517-243-5074
Michigan Chemical Exposure Program (MiCHEM)	MiChEM (pronounced: my-chem) is a statewide biomonitoring program focused on a representative sample of Michigan adults. MDHHS will evaluate exposures and measure concentrations of certain chemical in the blood and urine of these adults. This program aims to establish a statewide baseline level of exposure to environmental contaminants.	Darren Donnelly donnellyd2@michigan.gov (517) 331-4538
Michigan Climate and Health Adaptation (MICHAP) Program	To support a climate-resilient public health system by investigating climate-driven health risks, identifying needs for successful climate and health adaptation, and collaboratively implementing climate adaptation strategies.	Caroline Helsen helsenc@michigan.gov 517-335-0298
Michigan Environmental Public Health Tracking (MiTracking) Program	MiTracking makes data on Michigan-specific environmental hazards, human exposure to these hazards, and health effects available to the public via an online data query system.	Libby Trubac trubacl@michigan.gov 517-335-4661

Program/Project	Description	Manager/Coordinator
Michigan Multi-site Health Study (MSS)	The Multi-Site Study (MSS) is a study coordinated by the Center for Disease Control's Agency for Toxic Substances and Disease Registry (ATSDR) in partnership with MDHHS. It is happening in seven communities across the U.S., including the same Michigan communities as MiPEHS. The goal of MSS is to learn more about the relationship between PFAS exposure and health outcomes among different populations.	Melissa Jaiman-Cruz jaimancruz@michigan.gov 517-230-0638
Michigan PFAS Exposure and Health Study (MiPEHS)	MiPEHS (pronounced: my pez) is a longitudinal study that investigates exposures to PFAS and their relationship with health outcomes in the Michigan communities of the City of Parchment and Cooper Township in Kalamazoo County and the Rockford/Belmont Area in Kent County.	Melissa Jaiman-Cruz jaimancruz@michigan.gov 517-230-0638
Michigan Safe Siting (MISS) Program	MiSS is a statewide initiative to help childcare providers identify possible environmental dangers in and around the care location before it becomes a licensed childcare facility. The MiSS program is part of the Agency for Toxic Substances and Disease Registry's (ATSDR) nationwide Choose Safe Places for Early Care and Education program.	Karly Brown brownk80@michigan.gov 517-335-8350
North Kent County Exposure Assessment (NKCEA)	NKCEA is a regional effort that studied the relationship between drinking water with PFAS and the amount in the human body. The research study involves collecting blood samples from people in the northern Kent County area whose drinking water wells were found to have PFAS.	Rachel Long longr5@michigan.gov 517-290-9686

Program/Project	Description	Manager/Coordinator
Oscoda Area Exposure Assessment (OAEA)	MDHHS’s OAEA project is an investigation of exposure to certain chemicals in the blood and urine of residents of the Oscoda area, including heavy metals, PCBs, and PFAS. The OAEA is carried out as one part of the Michigan biomonitoring surveillance program named the Michigan Chemical Exposure Monitoring program, or MiChEM.	Chris Rudski RudskiC@michigan.gov (517) 243-1932
Per- and Polyfluoroalkyl Substances (PFAS) Site Response	MDHHS works alongside partner agencies as part of MPART (Michigan PFAS Action Response Team) site response, at locations where PFAS contamination is being investigated.	Contact Regional Engagement Coordinator (see slide 4)
PFAS in Firefighters in Michigan Surveillance (PFOMS)	PFAS are commonly used in Class B firefighting foam and firefighting protective gear. The PFOMS (pronounced: p-foams) project is a statewide initiative with the primary goal of determining concentrations of PFAS in the blood of Michigan firefighters. The findings of the PFOMS project will help inform decision making about how to minimize firefighters' exposure to PFAS.	Darren Donnelly donnellyd2@michigan.gov (517) 331-4538
Public Health Drinking Water Program	The PHDWP works as a safety net, beyond existing regulations, to further protect the people of Michigan from chemical and environmental hazards in drinking water. MDHHS is both authorized and obligated to protect public health by the Michigan Public Health Code (Act 368 of 1978).	Kaitlyn DeFouw defouwk@michigan.gov 517-285-3644