



Local Public Health Leaders Orientation

MICHIGAN DEPARTMENT OF HEALTH AND HUMAN SERVICES

FLINT, AUGUST 22, 2019

This Presentation Covers

- ▶ Mission Statement
- ▶ Departmental Structure (Background on formation of MDHHS)
- ▶ Major Programs
- ▶ Legal Basis
- ▶ Funding Sources
- ▶ Local Health Department Programs
- ▶ Other Programs
- ▶ Contracting Mechanisms
- ▶ Current Issues
- ▶ Important Departmental Contacts

MDHHS Mission & Vision Statement

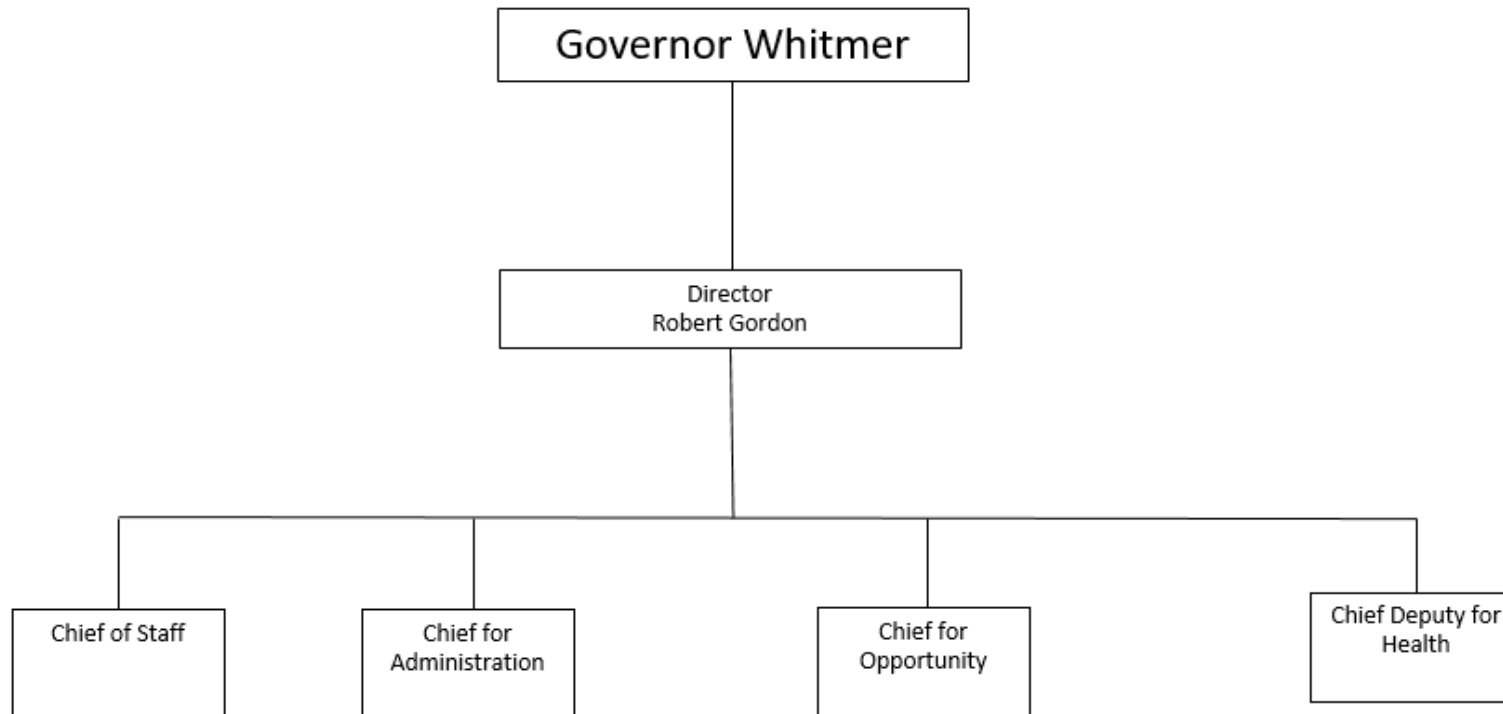
▶ Our Mission:

The Michigan Department of Health and Human Services provides opportunities, services, and programs that promote a healthy, safe, and stable environment for residents to be self-sufficient.

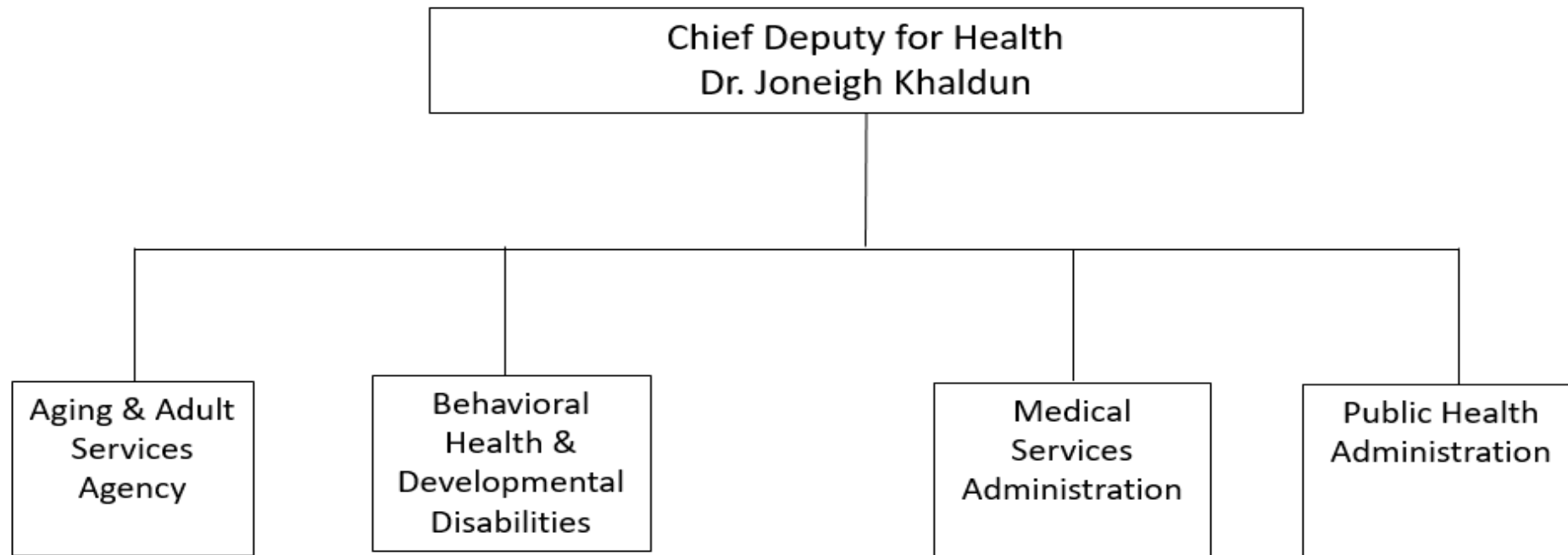
▶ Our Vision:

Develop and encourage measurable health, safety and self-sufficiency outcomes that reduce and prevent risks, promote equity, foster healthy habits, and transform the health and human services system to improve the lives of Michigan families.

Michigan Department of Health and Human Services (MDHHS)⁴



Departmental Structure – PHA





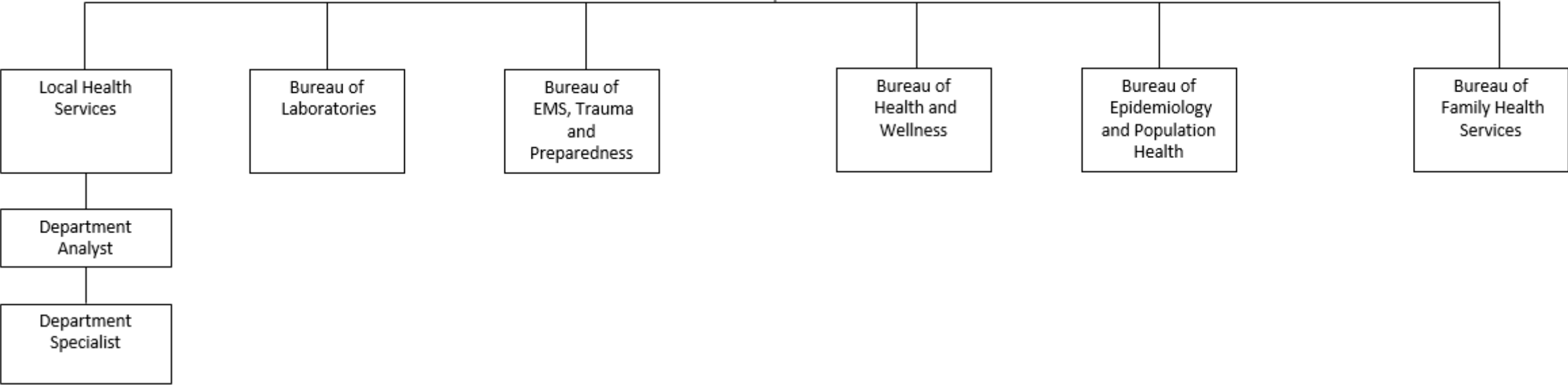
Chief Deputy for Health
Dr. Joneigh Khaldun

State Asst.
Admin.

State Asst.
Admin.

Public Health Admin.
Senior Deputy Director

Senior Mgmt. Executive



Orlando Todd Director

Hailey McWilliams
Executive Assistant

Accreditation & Quality Section (MPHI Contractors)

Jessie Jones
Manager

Research Assistant

Program Assistant

Research Assistant

Research Assistant

Office of Local Health Services Operations Section

Laura de la Rangel Dept. Specialist

Jon Gonzalez
Analyst A

Janine Whitmire
Operations Analyst

Student Intern

Prevent Block Grant Administration

Jane P.
Manager

Danielle B.
Financial Specialist

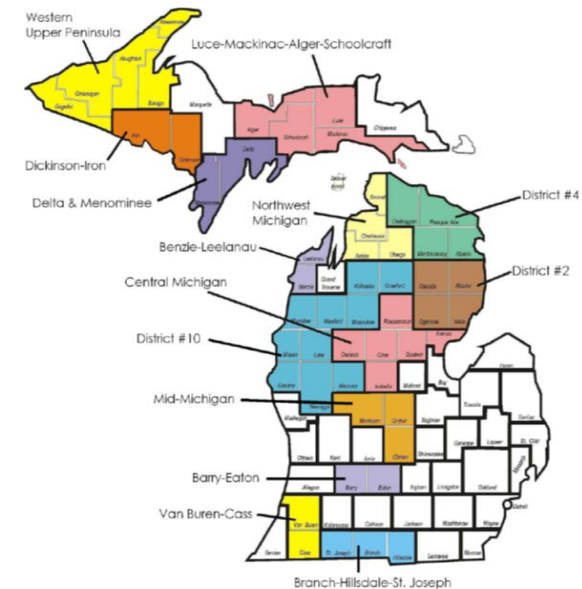
Major Programs

- Michigan's Local Public Health Accreditation Program (MPHI)
- Preventive Health & Health Services Block Grant (MPHI)
- Primary Point of Contact for Local Health Departments
- Emerging Topics

Legal Basis & Responsibility

A Michigan local health department shall: *(summarized from MI Public Health Code)*

- 30 single county, 14 district (i.e. multi-county) and 1 city health department (Detroit) collectively (45) covering Michigan's 83 counties
- Implement and enforce laws regarding local health.
- Utilize vital and health statistics for the purpose of protecting the public health.
- Make investigations and inquiries as to the causes of disease, morbidity and mortality, and especially of epidemics.
- Plan, implement, and evaluate health education.
- Plan, implement, and evaluate nutrition services.
- All vary as to amount and level of services



Legal Basis & Responsibility, continued

- ▶ Delegated MDHHS authority for Public Health Code
- ▶ Legally required to have a Health Officer and Medical Director (may be same person)
- ▶ Vary in size from approximately 25 staff to almost 500 staff
- ▶ Provide coverage for service population ranging from 50,000 to over 1,000,000 persons
- ▶ May or may not report to a Board of Health in addition to County/City governance structure

Funding Sources & Overall Budget

- ▶ MDHHS Budget FY 19 (signed 6/21/18): \$24.8 Billion
 - ▶ Includes funding for Healthy Michigan Plan, continued assistance for Flint Water Recovery, improved support for Local Health Departments
- ▶ MDHHS Local Health Services: Oversees over \$124 Million in Grants (includes Essential Local Public Health Services, PFAS, Vapor Intrusion, Hepatitis A, Preventive Health and Health Services Grant, Opioids)

Contract Mechanism For LPH

- ▶ Comprehensive Agreement managed through EGrAMS
 - ▶ <https://egramsmi.com/dch/user/home.aspx>

Local Health Department Programs (MDHHS)– Non-Exhaustive

- ▶ Breast and Cervical Cancer Control Navigation**
- ▶ Children's Special Health Care Services*
- ▶ Emergency Preparedness
- ▶ Family Planning*
- ▶ Fetal and Infant Mortality Review
- ▶ General Communicable Disease Control*
- ▶ Hearing*
- ▶ HIV/AIDS and STD*
- ▶ Immunization*
- ▶ Tobacco Reduction
- ▶ Lead Prevention, Lead Education and Outreach
- ▶ Maternal Infant Health Program
- ▶ Medicaid Outreach
- ▶ Vision*
- ▶ Women, Infants and Children (WIC)*

*Program is part of Michigan's Local Public Health Accreditation. Also includes Food Service and Onsite Wastewater Treatment.

**Leaving Accreditation in 2019

Programs Conducted Through other State Programs

- ▶ EGLE – Onsite Wastewater, Public Water Supply/Private Groundwater Supply
- ▶ LARA – Childcare/Adult Foster Care
- ▶ MDARD – Food Protection
- ▶ MDE – Early On

Non-exhaustive list

OLHS Relationships

- ▶ Michigan Association of Local Public Health (MALPH)
- ▶ Michigan Association Environmental Health Administrators (MALEHA)
- ▶ Michigan Association of Preventive Medicine and Public Health Physicians (Medical Directors-MAPPP)
- ▶ Administrators Forum
- ▶ Health Educators Forum
- ▶ IT Forum

Current Issues

- ▶ **Hepatitis A**
- ▶ **PFAS**
- ▶ **Vapor Intrusion**
- ▶ **Flint Water Recovery**
- ▶ **Essential Local Public Health Services (ELPHS)
Funding Formula**

Summary

- ▶ Relationship between MDHHS and Local Health is one of partnership.
- ▶ MDHHS Office of Local Health Services exists to offer information, connection, and to remove barriers.
- ▶ Together we are working to reduce health disparities and to improve health outcomes for all Michiganders!

Contact Information

Orlando Todd, MBA – Office of Local Health Services Director
ToddO@Michigan.gov

Laura de la Rambelje, MA – Program Administrator
deLaRambeljeL@Michigan.gov

Jon Gonzalez, MPP – Special Programs Coordinator
GonzalezJ6@Michigan.gov

Janine Whitmire, BS, Operations Analyst
whitemirej@Michigan.gov

Hailey McWilliams, Executive Assistant
mcwilliamsh@Michigan.gov