

# New Local Health Leader Orientation

## November 2018

---

Jeremy Hoeh, P.E.

Environmental Health Programs Unit Supervisor



## **This Presentation Covers**

- Environmental Health (EH)  
Section Structure within the  
Drinking Water & Municipal  
Assistance Division (DWMAD)
- DEQ's Role
- Funding for EH Programs
- LHD's Role
- Timelines & Responsibilities
- EHS Links
- DEQ Contacts

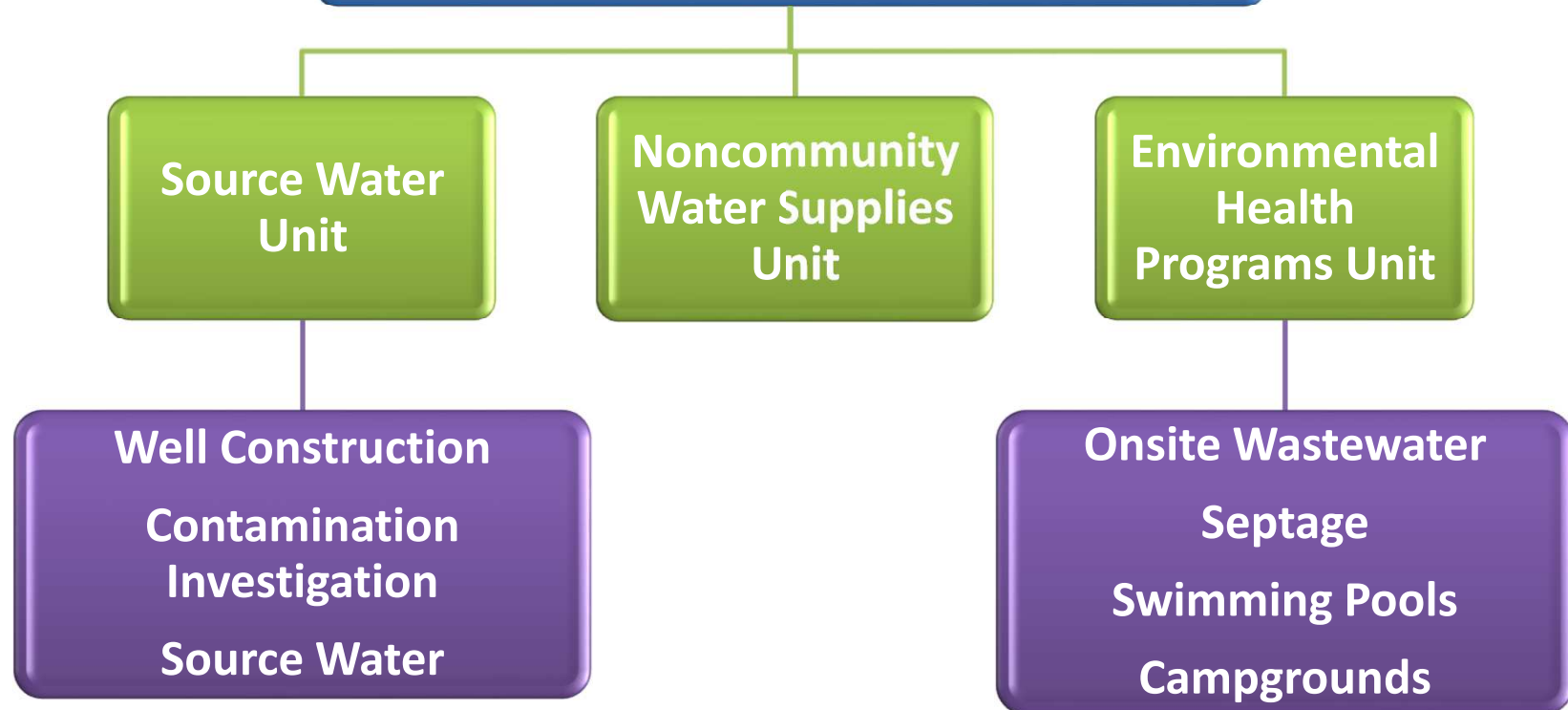


**DWMAD Mission-**  
***Safeguarding Michigan's  
Drinking Water and  
Environmental Health***



**Vision-**  
***Michigan Values and  
Invests in Safe and  
Reliable Water***

# Environmental Health Section





DEQ staff are assigned to LHDs for each EH program. DEQ staff:

**ALL  
Programs**

Provide  
technical  
assistance

Help with  
laws/rules  
interpretation

Provide training

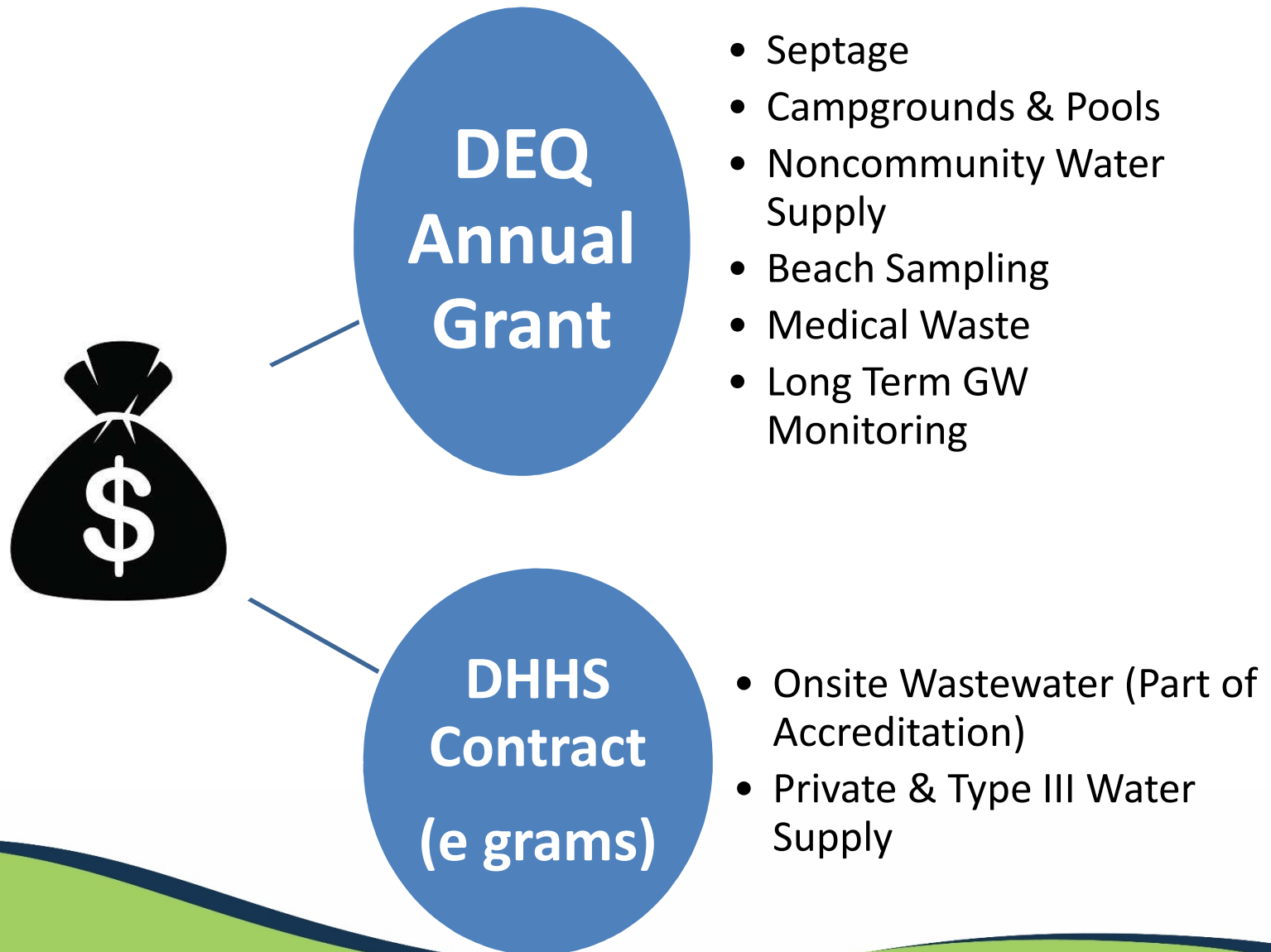
**SOME  
Programs**

Evaluate LHD  
programs  
(MPRs)

Help with  
escalated  
enforcement

Plan Review  
registration/  
license

# Funding for Local Health



# SOURCE WATER UNIT

## Well Construction Program

(Part 127 of Act 368)

### LHD Role:

- ✓ Issue water well construction permits
- ✓ Inspect water wells
- ✓ Ensure water wells meet well code and permit requirements
- ✓ Conduct contractor enforcement, if needed
- ✓ MPRs 5-7



# SOURCE WATER UNIT

## Contamination Investigation Program



### LHD Role:

- ✓ Collect samples for groundwater contamination investigations
- ✓ Assist with obtaining alternate water sources
- ✓ Collaborate with RRD
- ✓ Educate the public on water quality concerns



# SOURCE WATER UNIT

## Source Water Program

LHD Role:

- ✓ Conduct source water assessments on Nontransient Noncommunity water supplies



# NONCOMMUNITY WATER SUPPLIES UNIT

(Part 127 of Act 368 & Act 399)



## LHD Role:

- ✓ Conduct sanitary surveys
- ✓ Ensure Federal monitoring requirements are being met
- ✓ Issue water well construction permits
- ✓ Inspect water wells
- ✓ MPRs 1-4

# ENVIRONMENTAL HEALTH PROGRAMS UNIT

## **Onsite Wastewater Program**

(Local Sanitary Codes, Act 59, Act 288, Act 368)

### LHD Role:

- ✓ Issue onsite wastewater construction permits (<10,000 GPD)
- ✓ Inspect newly installed systems
- ✓ Evaluate vacant property
- ✓ Conduct plat review
- ✓ Investigate sewage related complaints





# ENVIRONMENTAL HEALTH PROGRAMS UNIT

## Septage Program

(Part 117 of Act 451)



### LHD Role:

- ✓ Inspect septage pumping vehicles
- ✓ Inspect septage waste receiving facilities
- ✓ Inspect septage land applications sites
- ✓ Investigate complaints



# ENVIRONMENTAL HEALTH PROGRAMS UNIT

## Campground Program

(Part 125 Act 368)



LHD Role:

- ✓ Inspect campgrounds annually
- ✓ Inspect temporary campgrounds

# ENVIRONMENTAL HEALTH PROGRAMS UNIT

## Swimming Pool Program

(Act 368)

LHD Role:

- ✓ Inspect public swimming pools
- ✓ Review monthly operational reports



# Timelines/Responsibilities

LHDs submit program reports and/or requests for payment

- ☐ Private & Type III Water Supplies
- ☐ [Onsite Wastewater](#)
- ☐ Noncommunity Water Supplies
- ☐ Contamination Investigation

LHDs submit inspection reports

- ☐ Swimming Pools & Campgrounds
- ☐ Septage

# EH Links

[www.michigan.gov/drinkingwater](http://www.michigan.gov/drinkingwater)

[www.michigan.gov/deqwaterwellconstruction](http://www.michigan.gov/deqwaterwellconstruction)

[www.michigan.gov/deqnoncommunitywatersupply](http://www.michigan.gov/deqnoncommunitywatersupply)

[www.michigan.gov/deqonsitewastewater](http://www.michigan.gov/deqonsitewastewater)

[www.michigan.gov/deqseptage](http://www.michigan.gov/deqseptage)

[www.michigan.gov/deqcampgrounds](http://www.michigan.gov/deqcampgrounds)

[www.michigan.gov/deqpools](http://www.michigan.gov/deqpools)

[www.michigan.gov/pfasresponse](http://www.michigan.gov/pfasresponse)

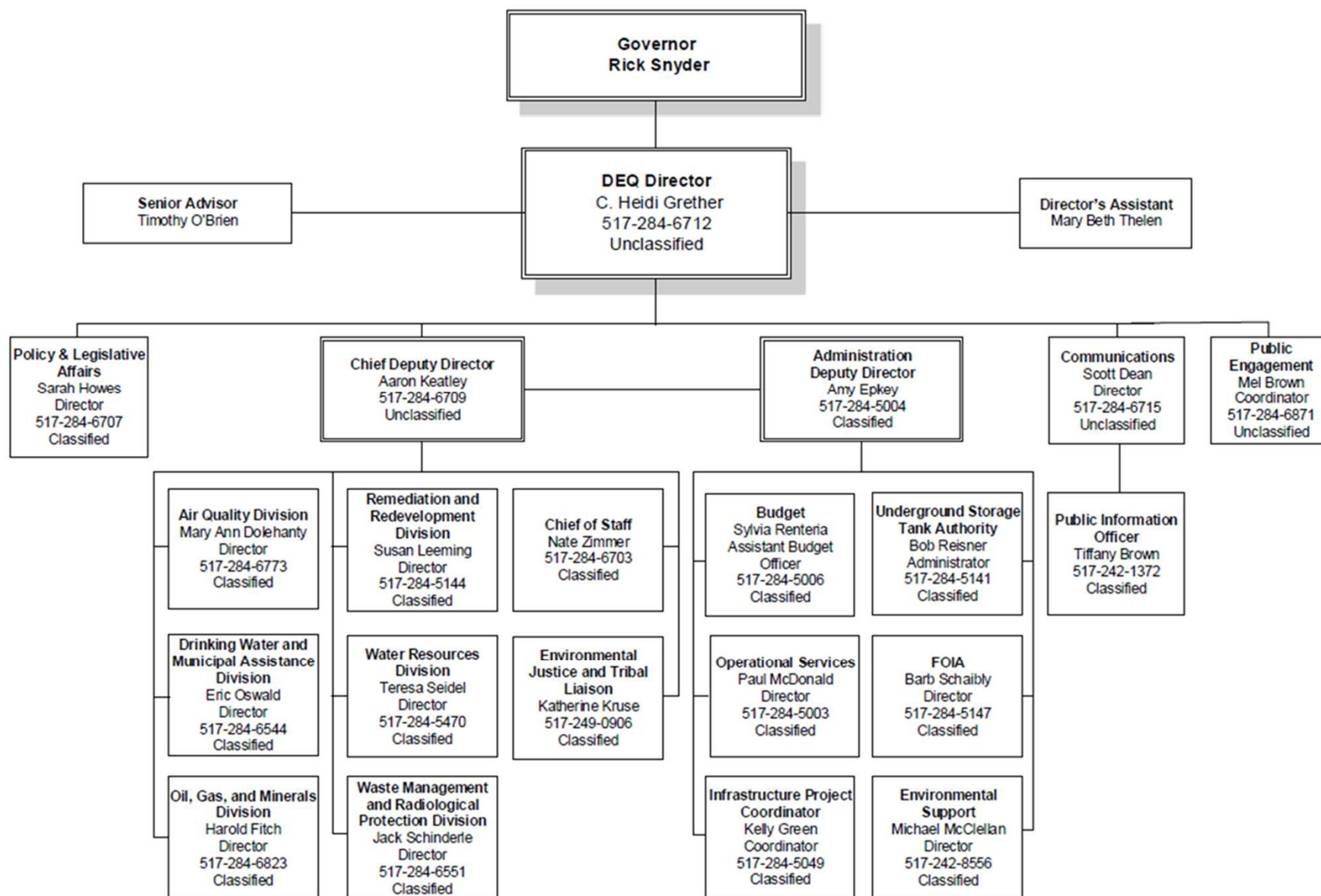
[DEQ-EH@michigan.gov](mailto:DEQ-EH@michigan.gov) – EMAIL





# DEQ Organizational Structure

June 4, 2018



# Examples of other DEQ Programs

- Drinking Water and Municipal Assistance
  - Community Water Supply (Act 399)
- Water Resources Division
  - Large quantity water withdrawals (Part 327)
  - >10,000 GPD wastewater construction permits (Part 41)
  - Groundwater discharge permits (Part 31)
  - Soil erosion & sedimentation control (Part 91)
  - BeachGuard
- Remediation & Redevelopment Division
  - Contamination sites including vapor intrusion (Part 201 & Part 213)
- Waste Management & Radiological Protection Division
  - Indoor radon testing
- Emergency Management
- Pollution Emergency Alerting System (PEAS) 1-800-292-4706



# DEQ Program Contacts



## DEQ Support

### Environmental Emergencies

To file an Environmental Complaint call **800-292-4706**

If you need to report an environmental emergency situation, [System \(PEAS\)](#) at:

**800-292-4706**

During daytime hours, you may also contact the appropriate

[Report a Spill Release](#)

## Programs by Division

[Sort by Division](#) | [Sort Alphabetically](#) | [Sort by Theme](#)

### Air Quality Division (AQD)

[Air Laws & Rules](#) 517-284-6740

Email Address: [debruler@michigan.gov](mailto:debruler@michigan.gov)

Division Information: [Air Quality Division \(AQD\)](#)

[Air Permits](#) 517-284-6793

Email Address: [shootz1@michigan.gov](mailto:shootz1@michigan.gov)

Division Information: [Air Quality Division \(AQD\)](#)

[Air Toxics](#) 517-284-6763

Email Address: [sillsr@michigan.gov](mailto:sillsr@michigan.gov)

Division Information: [Air Quality Division \(AQD\)](#)

[Air Toxics Screening Levels](#) 517-284-6753

Email Address: [lehnerd@michigan.gov](mailto:lehnerd@michigan.gov)

Division Information: [Air Quality Division \(AQD\)](#)

[Ambient Monitoring](#) 517-284-6752

Email Address: [kilmers@michigan.gov](mailto:kilmers@michigan.gov)

Division Information: [Air Quality Division \(AQD\)](#)



# Michigan.gov/drinkingwater

