



MICHIGAN DEPARTMENT OF
ENVIRONMENT, GREAT LAKES, AND ENERGY

New Local Health Leader Orientation

August 2019

Dana DeBruyn REHS

Environmental Health Section Manager

517-930-6463 | DeBruynD@Michigan.gov



This
Presentation
Covers

- Environmental Health (EH) Section Structure within the Drinking Water and Environmental Health Division (DWEHD)
- EGLE's Role
- Funding for EH Programs
- LHD's Role
- Timelines and Responsibilities
- EHS Links
- EGLE Contacts

DWEHD Mission-
*Safeguarding
Michigan's
Drinking Water and
Environmental
Health*

Vision-
*Michigan Values and
Invests in Safe and
Reliable Water*



Environmental Health Section

```
graph TD; A[Environmental Health Section] --> B[Source Water Unit]; A --> C[Noncommunity Water Supplies Unit]; A --> D[Environmental Health Programs Unit]; B --> E["Well Construction<br/>Contamination Investigation<br/>Source Water"]; D --> F["Onsite Wastewater<br/>Septage<br/>Swimming Pools<br/>Campgrounds"];
```

**Source Water
Unit**

**Noncommunity
Water Supplies
Unit**

**Environmental
Health
Programs Unit**

**Well Construction
Contamination
Investigation
Source Water**

**Onsite Wastewater
Septage
Swimming Pools
Campgrounds**

EGLE staff are assigned to LHDs for each EH program. EGLE staff:

**ALL
Programs**

Provide
technical
assistance

Help with
laws/rules
interpretation

Provide training

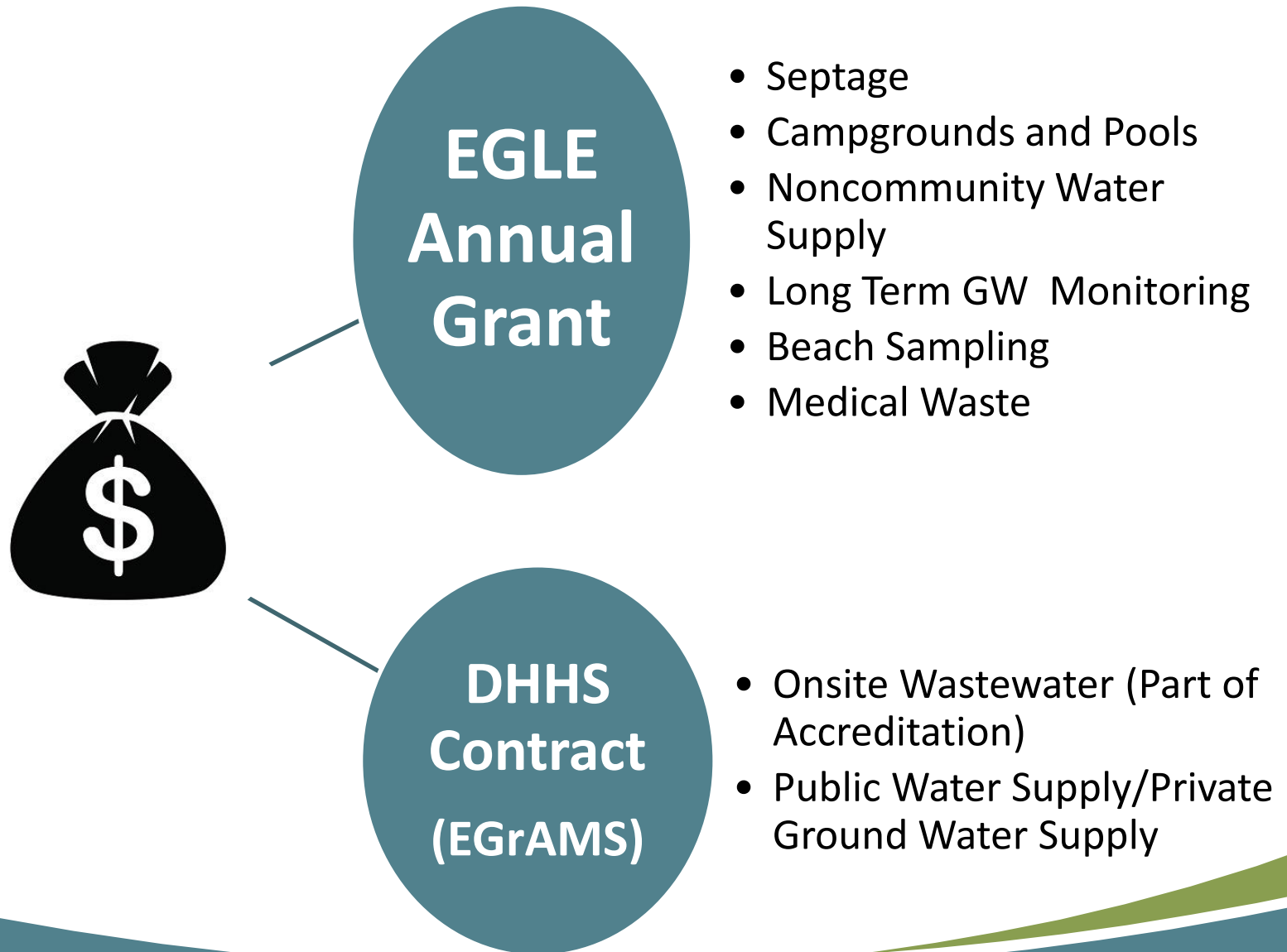
**SOME
Programs**

Evaluate LHD
programs
(MPRs)

Help with
escalated
enforcement

Plan Review
registration/
license

Funding for Local Health



SOURCE WATER UNIT

Well Construction Program

(Part 127 of Act 368)

LHD Role:

- ✓ Issue water well construction permits
- ✓ Inspect water wells
- ✓ Ensure water wells meet well code and permit requirements
- ✓ Conduct contractor enforcement, if needed
- ✓ MPRs 5-7



SOURCE WATER UNIT

Contamination Investigation Program



LHD Role:

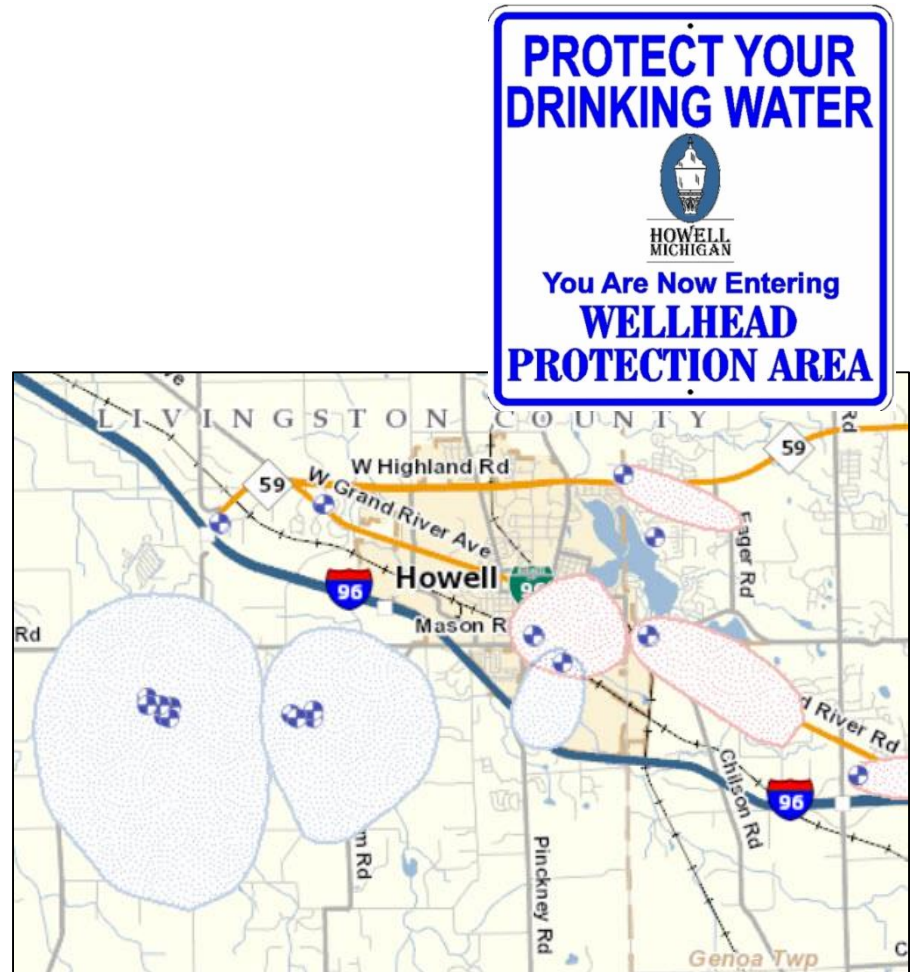
- ✓ Collect samples for groundwater contamination investigations
- ✓ Assist with obtaining alternate water sources
- ✓ Collaborate with RRD
- ✓ Educate the public on water quality concerns

SOURCE WATER UNIT

Source Water Program

LHD Role:

- ✓ Conduct source water assessments on Nontransient Noncommunity water supplies



NONCOMMUNITY WATER SUPPLIES UNIT

(Part 127 of Act 368 and Act 399)



LHD Role:

- ✓ Conduct sanitary surveys
- ✓ Ensure Federal monitoring requirements are being met
- ✓ Issue water well construction permits
- ✓ Inspect water wells
- ✓ MPRs 1-4

ENVIRONMENTAL HEALTH PROGRAMS UNIT

Onsite Wastewater Program

(Local Sanitary Codes, Act 59, Act 288, Act 368)

LHD Role:

- ✓ Issue onsite wastewater construction permits (<10,000 GPD)
- ✓ Inspect newly installed systems
- ✓ Evaluate vacant property
- ✓ Conduct plat review
- ✓ Investigate sewage related complaints



ENVIRONMENTAL HEALTH PROGRAMS UNIT

Septage Program

(Part 117 of Act 451)



LHD Role:

- ✓ Inspect septage pumping vehicles
- ✓ Inspect septage waste receiving facilities
- ✓ Inspect septage land applications sites
- ✓ Investigate complaints

ENVIRONMENTAL HEALTH PROGRAMS UNIT

Campground Program

(Part 125 Act 368)



LHD Role:

- ✓ Inspect campgrounds annually
- ✓ Inspect temporary campgrounds

ENVIRONMENTAL HEALTH PROGRAMS UNIT

Swimming Pool Program

(Act 368)

LHD Role:

- ✓ Inspect public swimming pools
- ✓ Review monthly operational reports



Timelines/Responsibilities

LHDs submit program reports and/or requests for payment

- ☐ Private and Type III Water Supplies
- ☐ [Onsite Wastewater](#)
- ☐ Noncommunity Water Supplies
- ☐ Contamination Investigation

LHDs submit inspection reports

- ☐ Swimming Pools and Campgrounds
- ☐ Septage

Helpful Links

Michigan.gov/DrinkingWater

Michigan.gov/EGLEWaterWellConstruction

Michigan.gov/EGLENoncommunityWaterSupply

Michigan.gov/EGLEOnsiteWastewater

Michigan.gov/EGLESeptage

Michigan.gov/EGLECampgrounds

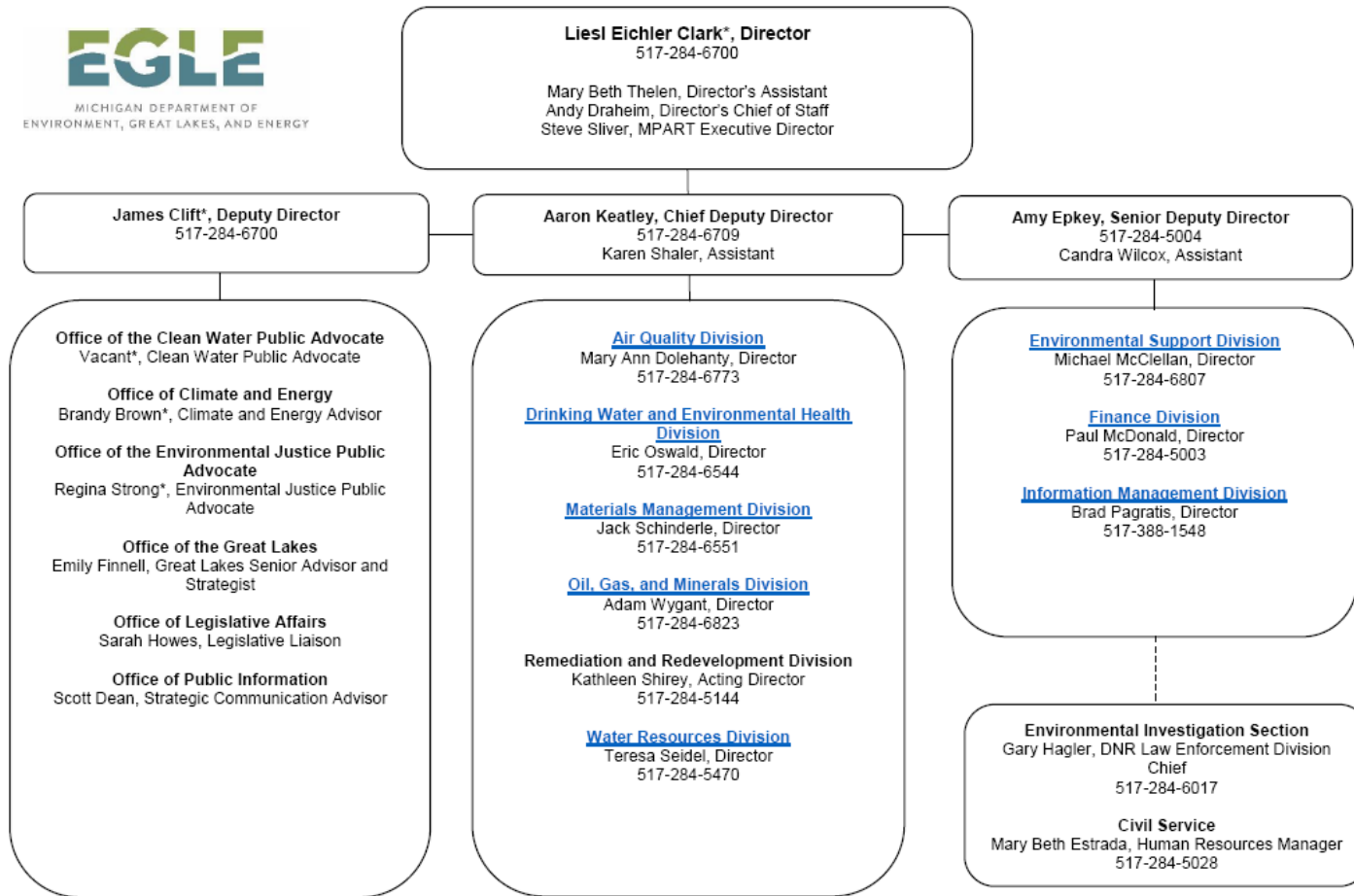
Michigan.gov/EGLEPools

Michigan.gov/PFASResponse

Michigan.gov/EGLELab

EGLE-EH@Michigan.gov – EMAIL

Organizational Structure



*Denotes unclassified positions .

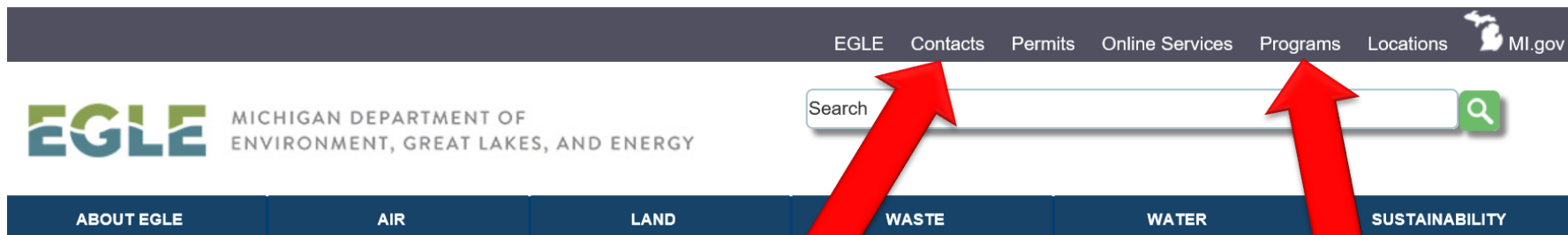
Page 1

July 1, 2019

Examples of other EGLE Programs

- Drinking Water and Environmental Health
 - Community Water Supply (Act 399)
- Water Resources Division
 - Large quantity water withdrawals (Part 327)
 - >10,000 GPD wastewater construction permits (Part 41)
 - Groundwater discharge permits (Part 31)
 - Soil erosion and sedimentation control (Part 91)
- Remediation and Redevelopment Division
 - Contamination sites including vapor intrusion (Part 201 and Part 213)
 - Environmental and Drinking Water Laboratory
- Waste Management and Radiological Protection Division
 - Indoor radon testing
- Emergency Management
- Pollution Emergency Alerting System (PEAS) 1-800-292-4706

EGLE Program Contacts



EGLE Support

Environmental Emergencies

To file an Environmental Complaint call **800-292-4706**.
If you need to report an environmental emergency situation, please dial the 24 hour [Pollution Emergency Alert System \(PEAS\)](#) at: **800-292-4706**.

During daytime hours, you may also [contact the appropriate district office](#) directly.

Report a Spill Release

Programs by Division

[Sort by Division](#) | [Sort Alphabetically](#) | [Sort by Theme](#)

Air Quality Division (AQD)

[Air Compliance](#) 517-582-3063

Email Address: EthridgeC@Michigan.gov

Division Information: [Air Quality Division \(AQD\)](#)

[Air Laws & Rules](#) 517-284-6740

Email Address: DeBrulerC@Michigan.gov

Division Information: [Air Quality Division \(AQD\)](#)

[Air Permits](#) 517-284-6793

Email Address: ShootzL1@Michigan.gov

Division Information: [Air Quality Division \(AQD\)](#)

[Air Toxics](#) 517-284-6763

Email Address: WilliamsK29@Michigan.gov

Division Information: [Air Quality Division \(AQD\)](#)

[Air Toxics Screening Levels](#) 517-284-6753

Email Address: LehnerD@Michigan.gov

Division Information: [Air Quality Division \(AQD\)](#)

[Ambient Monitoring](#) 517-284-6752

Email Address: KilmerS@Michigan.gov

Division Information: [Air Quality Division \(AQD\)](#)

Michigan Department of
Environment, Great Lakes, and Energy

800-662-9278

Michigan.gov/EGLE



Michigan.gov/DrinkingWater