

New Local Health Leader Orientation

November 2018

Dana DeBruyn REHS
Environmental Health Section Manager



This Presentation Covers

- Environmental Health (EH)
Section Structure within the
Drinking Water & Municipal
Assistance Division (DWMAD)
- DEQ's Role
- Funding for EH Programs
- LHD's Role
- Timelines & Responsibilities
- EHS Links
- DEQ Contacts

DWMAD Mission-
***Safeguarding Michigan's
Drinking Water and
Environmental Health***



Vision-
***Michigan Values and
Invests in Safe and
Reliable Water***

Environmental Health Section



```
graph TD; A[Environmental Health Section] --> B[Source Water Unit]; A --> C[Noncommunity Water Supplies Unit]; A --> D[Environmental Health Programs Unit]; B --> E["Well Construction<br/>Contamination Investigation<br/>Source Water"]; D --> F["Onsite Wastewater<br/>Septage<br/>Swimming Pools<br/>Campgrounds"];
```

The diagram is an organizational chart for the Environmental Health Section. At the top is a blue box labeled 'Environmental Health Section'. A horizontal line below it connects to three green boxes: 'Source Water Unit', 'Noncommunity Water Supplies Unit', and 'Environmental Health Programs Unit'. From 'Source Water Unit', a vertical line leads down to a purple box containing 'Well Construction', 'Contamination Investigation', and 'Source Water'. From 'Environmental Health Programs Unit', a vertical line leads down to a purple box containing 'Onsite Wastewater', 'Septage', 'Swimming Pools', and 'Campgrounds'. The 'Noncommunity Water Supplies Unit' has no further sub-units shown.

**Source Water
Unit**

**Noncommunity
Water Supplies
Unit**

**Environmental
Health
Programs Unit**

**Well Construction
Contamination
Investigation
Source Water**

**Onsite Wastewater
Septage
Swimming Pools
Campgrounds**

DEQ staff are assigned to LHDs for each EH program. DEQ staff:

**ALL
Programs**

Provide
technical
assistance

Help with
laws/rules
interpretation

Provide training

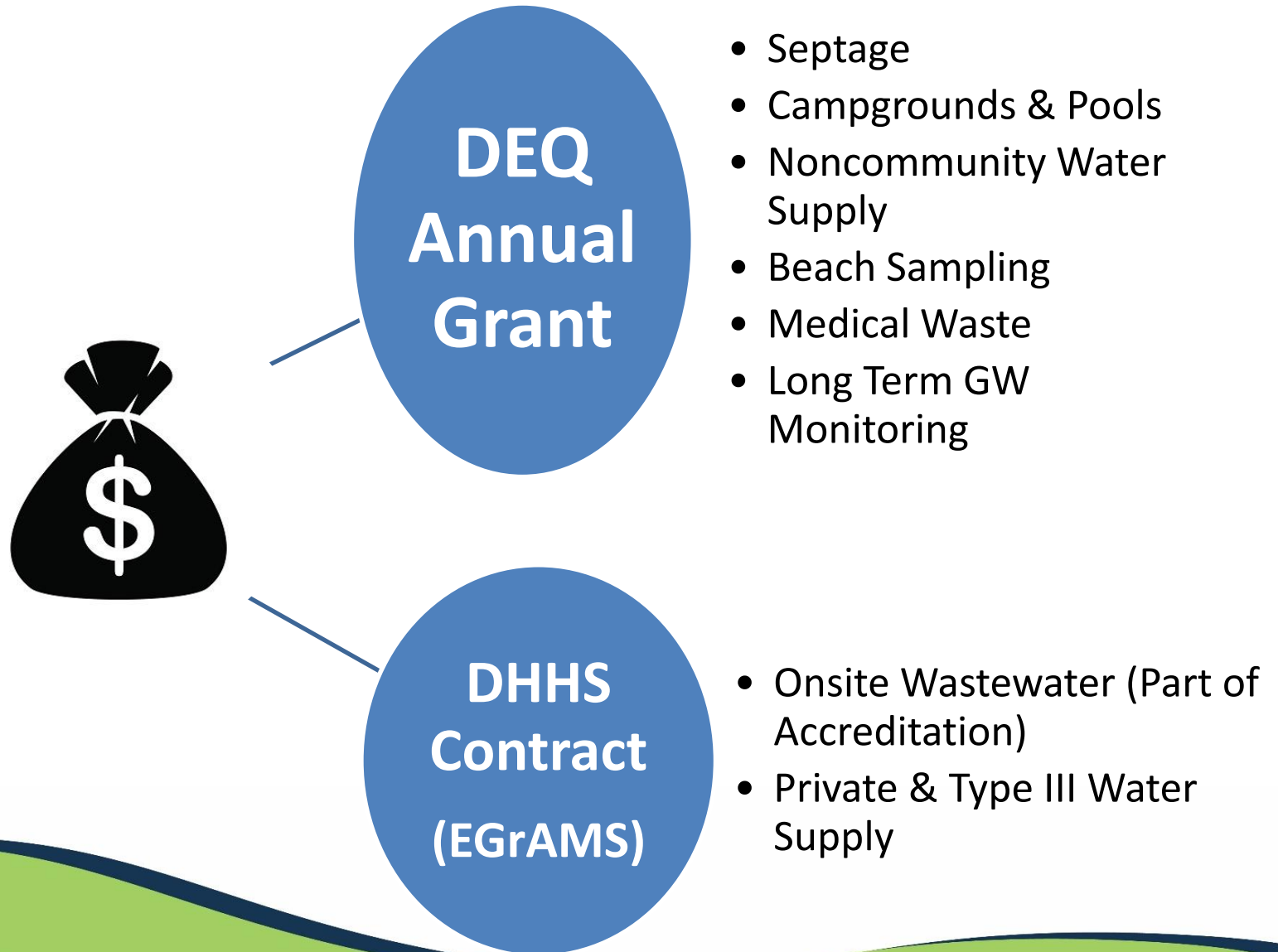
**SOME
Programs**

Evaluate LHD
programs
(MPRs)

Help with
escalated
enforcement

Plan Review
registration/
license

Funding for Local Health



SOURCE WATER UNIT

Well Construction Program

(Part 127 of Act 368)

LHD Role:

- ✓ Issue water well construction permits
- ✓ Inspect water wells
- ✓ Ensure water wells meet well code and permit requirements
- ✓ Conduct contractor enforcement, if needed
- ✓ MPRs 5-7



SOURCE WATER UNIT

Contamination Investigation Program



LHD Role:

- ✓ Collect samples for groundwater contamination investigations
- ✓ Assist with obtaining alternate water sources
- ✓ Collaborate with RRD
- ✓ Educate the public on water quality concerns

SOURCE WATER UNIT

Source Water Program

LHD Role:

- ✓ Conduct source water assessments on Nontransient Noncommunity water supplies



NONCOMMUNITY WATER SUPPLIES UNIT

(Part 127 of Act 368 & Act 399)



LHD Role:

- ✓ Conduct sanitary surveys
- ✓ Ensure Federal monitoring requirements are being met
- ✓ Issue water well construction permits
- ✓ Inspect water wells
- ✓ MPRs 1-4

ENVIRONMENTAL HEALTH PROGRAMS UNIT

Onsite Wastewater Program

(Local Sanitary Codes, Act 59, Act 288, Act 368)

LHD Role:

- ✓ Issue onsite wastewater construction permits (<10,000 GPD)
- ✓ Inspect newly installed systems
- ✓ Evaluate vacant property
- ✓ Conduct plat review
- ✓ Investigate sewage related complaints



ENVIRONMENTAL HEALTH PROGRAMS UNIT

Septage Program

(Part 117 of Act 451)



LHD Role:

- ✓ Inspect septage pumping vehicles
- ✓ Inspect septage waste receiving facilities
- ✓ Inspect septage land applications sites
- ✓ Investigate complaints

ENVIRONMENTAL HEALTH PROGRAMS UNIT

Campground Program

(Part 125 Act 368)



LHD Role:

- ✓ Inspect campgrounds annually
- ✓ Inspect temporary campgrounds

ENVIRONMENTAL HEALTH PROGRAMS UNIT

Swimming Pool Program

(Act 368)

LHD Role:

- ✓ Inspect public swimming pools
- ✓ Review monthly operational reports



Timelines/Responsibilities

LHDs submit program reports and/or requests for payment

- ☐ Private & Type III Water Supplies
- ☐ [Onsite Wastewater](#)
- ☐ Noncommunity Water Supplies
- ☐ Contamination Investigation

LHDs submit inspection reports

- ☐ Swimming Pools & Campgrounds
- ☐ Septage

EH Links

www.michigan.gov/drinkingwater

www.michigan.gov/deqwaterwellconstruction

www.michigan.gov/deqnoncommunitywatersupply

www.michigan.gov/deqonsitewastewater

www.michigan.gov/deqseptage

www.michigan.gov/deqcampgrounds

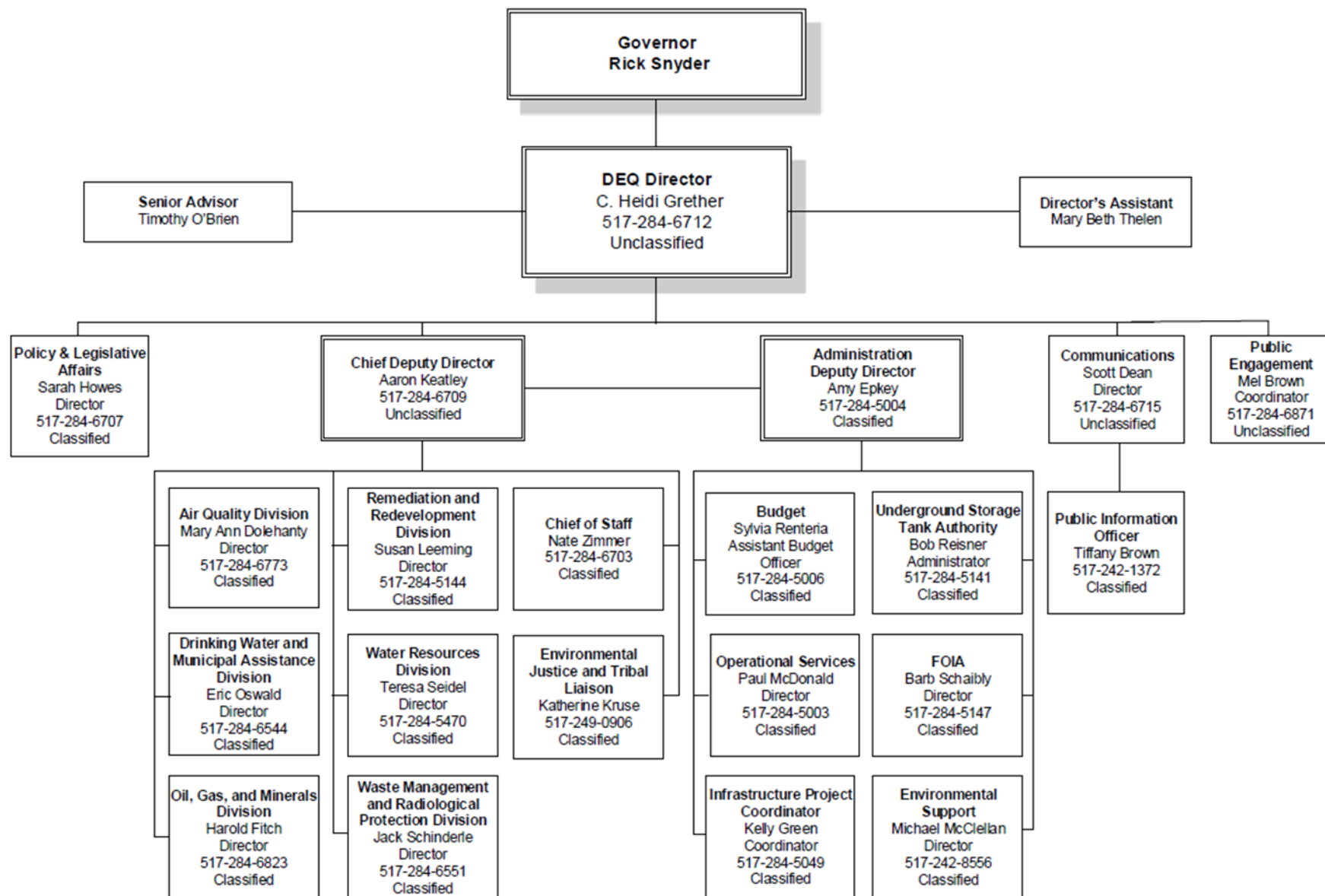
www.michigan.gov/deqpools

www.michigan.gov/pfasresponse

DEQ-EH@michigan.gov – EMAIL

DEQ Organizational Structure

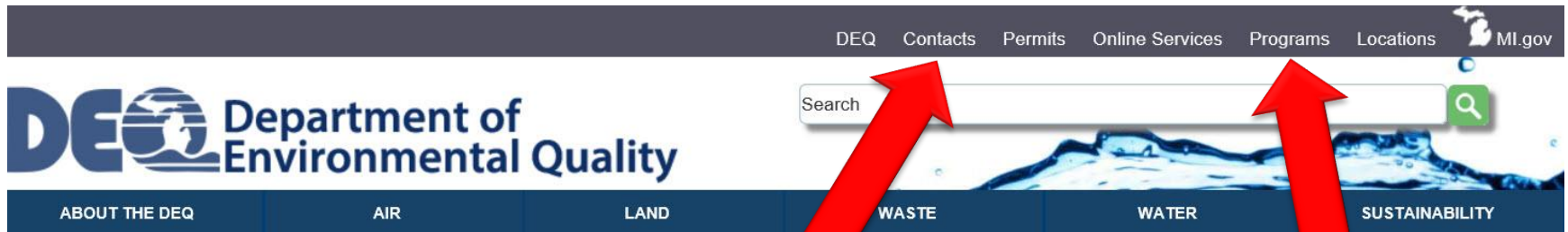
June 4, 2018



Examples of other DEQ Programs

- Drinking Water and Municipal Assistance
 - Community Water Supply (Act 399)
- Water Resources Division
 - Large quantity water withdrawals (Part 327)
 - >10,000 GPD wastewater construction permits (Part 41)
 - Groundwater discharge permits (Part 31)
 - Soil erosion & sedimentation control (Part 91)
 - BeachGuard
- Remediation & Redevelopment Division
 - Contamination sites including vapor intrusion (Part 201 & Part 213)
- Waste Management & Radiological Protection Division
 - Indoor radon testing
- Emergency Management
- Pollution Emergency Alerting System (PEAS) 1-800-292-4706

DEQ Program Contacts



DEQ Support

Environmental Emergencies

To file an Environmental Complaint call **800-292-4706**

If you need to report an environmental emergency situation,

System (PEAS) at:

800-292-4706

During daytime hours, you may also contact the appropriate

[Report a Spill Release](#)

Programs by Division

[Sort by Division](#) | [Sort Alphabetically](#) | [Sort by Theme](#)

Air Quality Division (AQD)

[Air Laws & Rules](#) 517-284-6740

Email Address: debrulerc@michigan.gov

Division Information: [Air Quality Division \(AQD\)](#)

[Air Permits](#) 517-284-6793

Email Address: shootz1@michigan.gov

Division Information: [Air Quality Division \(AQD\)](#)

[Air Toxics](#) 517-284-6763

Email Address: sillsr@michigan.gov

Division Information: [Air Quality Division \(AQD\)](#)

[Air Toxics Screening Levels](#) 517-284-6753

Email Address: lehnerd@michigan.gov

Division Information: [Air Quality Division \(AQD\)](#)

[Ambient Monitoring](#) 517-284-6752

Email Address: kilmers@michigan.gov

Division Information: [Air Quality Division \(AQD\)](#)



Michigan.gov/drinkingwater
