

# MICHIGAN

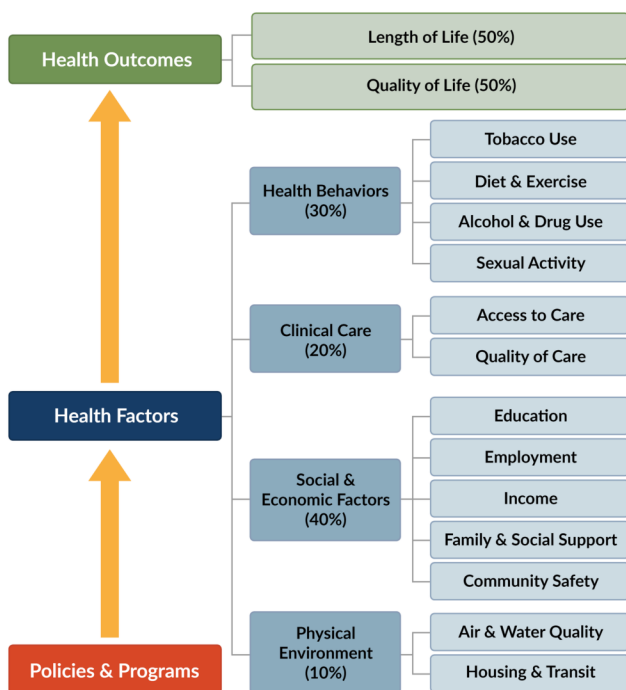
Michigan Association for Local Public Health | April 10, 2024

## What are the County Health Rankings & Roadmaps?

With funding from the Robert Wood Johnson Foundation, the University of Wisconsin Population Health Institute created the CHR&R to bring **actionable data and guidance** to residents and leaders across the nation. Communities can use the CHR&R to build support for local health improvement initiatives by engaging many sectors including public health, health care, business, policymakers, and local residents.

In the annual CHR&R report, you can find measures of current overall health (**health outcomes**) of each county in all 50 states and the District of Columbia. The findings also include **health factors**, including high school graduation rates, access to healthy foods, poverty, and violence incidence, which help us understand the future health of communities.

A focus of CHR&R 2023 was **civic health**, continued in CHR&R 2024, which reflects the opportunities people have to participate in their communities. Both **civic infrastructure** and **civic participation** are additional elements in county snapshots this year.



County Health Rankings model © 2014 UWPHI

## The CHR&R Model

The CHR&R Model illustrates a broad vision for health. The model shows that **policies and programs at the local, state, and federal levels** play an important role in shaping health factors that in turn, influence a community's health outcomes. **Health factors** represent things that, if modified, can improve length and quality of life; they are predictors of how healthy our communities can be. **Health outcomes** represent how healthy a county is right now, reflecting the physical and mental wellbeing of residents through measures on length and quality of life.

# County Health Rankings & Roadmaps Presentation 2024

# MICHIGAN

Michigan Association for Local Public Health | April 10, 2024

New to the CHR&R National Findings and Data Release for 2024:

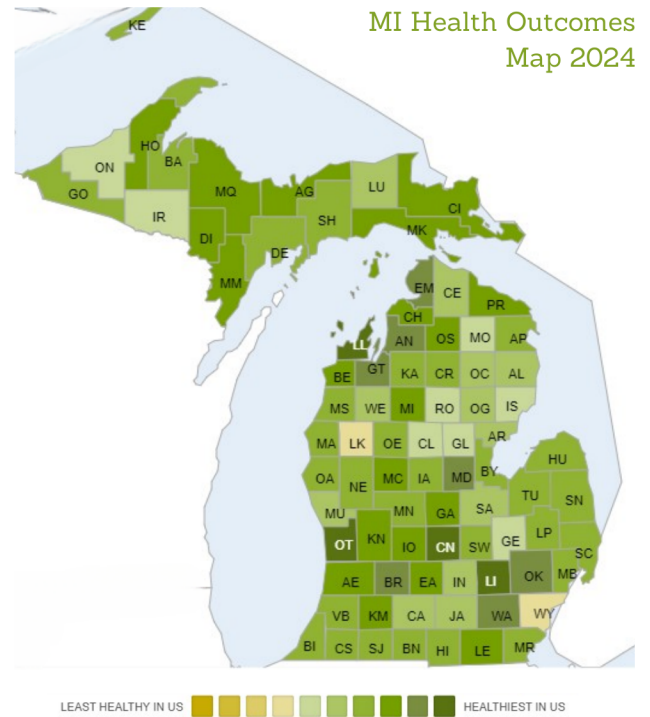
Counties are placed into ten health groups, on a continuum from least healthy to healthiest in the nation. Michigan counties are no longer ranked from one to 83, but compared to a national scale.

## Health Outcomes

The green map (right) shows **Michigan's health outcomes**. The map color indicates ten health groups, ranging from least healthy to healthiest in the US (see key).

Health outcomes findings are determined by two categories: **length of life** and **quality of life**. It is important to note the groups are good for sparking conversations, but that they do not show differences in health within counties or describe the magnitude of difference in community health experienced.

More detailed information on the health outcomes findings is available on the CHR&R website and in the National Findings Report.



Scan this QR code to see the County Health Rankings for Michigan in 2024.

The County Health Rankings & Roadmaps is published and owned by the University of Wisconsin Population Health Institute and sponsored by the Robert Wood Johnson Foundation.



## Health Factors

**Health factors** represent community **conditions that can be changed to improve health** and opportunities, including health behaviors, clinical care, socioeconomic, and physical environment. CHR&R groups counties by health factors just as it does for health outcomes – **find all the rankings and corresponding maps on the website.**