

County Health Rankings & Roadmaps Presentation 2025

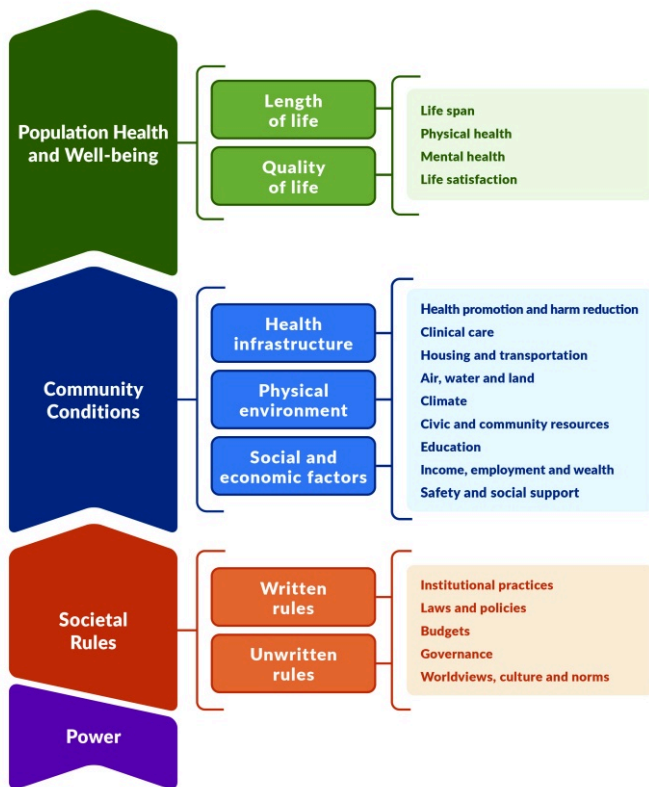
MICHIGAN

Michigan Association for Local Public Health | April 9, 2025

THE BASICS: COUNTY HEALTH RANKINGS & ROADMAPS

With funding from the Robert Wood Johnson Foundation, the University of Wisconsin Population Health Institute created the CHR&R to bring **actionable data and guidance** to residents and leaders across the nation. Communities can use the CHR&R to build support for local health improvement initiatives by engaging many sectors including public health, health care, business, policymakers, and local residents.

In the annual CHR&R report, you can find measures of current overall health (**health outcomes**) of each county in all 50 states and the District of Columbia. The findings also include **health factors**, including high school graduation rates, access to healthy foods, poverty, and violence incidence, which help us understand the future health of communities.



University of Wisconsin Population Health Institute Model of Health © 2025

The County Health Rankings & Roadmaps is published and owned by the University of Wisconsin Population Health Institute and sponsored by the Robert Wood Johnson Foundation.

THE CHR&R MODEL

In 2025, the University of Wisconsin Population Health Institute debuted a **new model for health**, an evolution of the 2014 model, which reflects our broadening understanding of what impacts health.

The **Population Health and Well-being** component expands upon Health Outcomes from the 2014 model. The **Community Conditions** component builds on the 2014 section Health Factors, articulating that factors that influence health are shaped by a larger society. The **Societal Rules** and **Power** components are unweighted parts of the model, but they inform the rest of the model and allow us to identify points of change and community influence.

Further explanation of the new model can be found at countyhealthrankings.org.

County Health Rankings & Roadmaps Presentation 2025

MICHIGAN

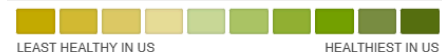
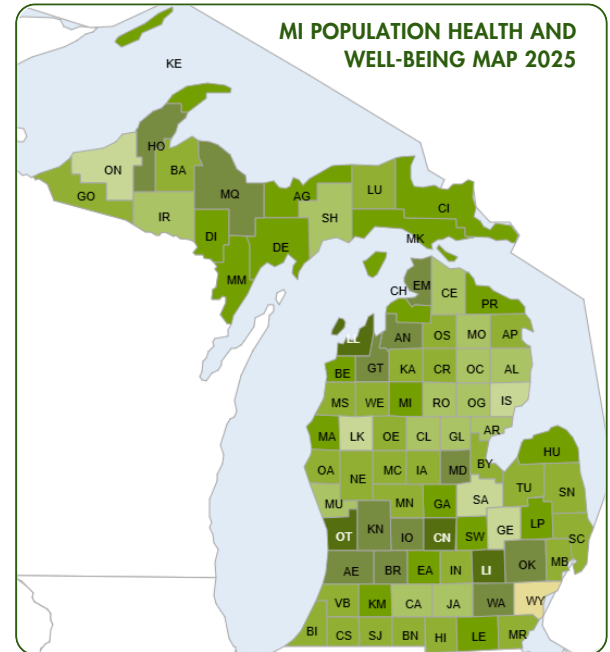
Michigan Association for Local Public Health | April 9, 2025

New to the CHR&R National Findings and Data Release as of 2024:
Counties are placed into ten health groups, on a continuum from least healthy to healthiest in the nation.
Michigan counties are no longer ranked from one to 83, but compared to a national scale.

POP. HEALTH & WELL-BEING

The map (right) shows Michigan's **Population Health and Well-being** for 2025. These findings are determined by two categories: **length of life** and **quality of life**.

The map color range indicates **ten health groups**, ranging from least healthy to healthiest in the US (see key). It is important to note the health groups are good for sparking conversations, but that they do not show differences in health *within* counties or describe the magnitude of difference in community health experienced. Also — tracking progress over time is most effective when looking at individual measures, not a county's overall score.



COMMUNITY CONDITIONS

Community conditions are health factors that can be changed to improve health and opportunities. This includes measurements categorized into **health infrastructure** (e.g. the number of preventable hospital stays), **physical environment** (e.g. air pollution), and **social and economic factors** (e.g. childcare cost burden).

This explainer is a product of the Michigan Assoc. for Local Public Health.

CHR&R groups counties by Community Conditions just as it does for Population Health and Well-being — **find all measurements and corresponding maps on the website.**

SCAN THIS QR CODE TO SEE ALL THE CHR&R DATA FOR MICHIGAN IN 2025!

Check out the new MDHHS Public Health Data Dashboards, providing community profiles at the state legislative district level!