

# ADOLESCENT HEALTH INITIATIVE



# TRANSFORMING HEALTH CENTERS INTO ADOLESCENT- CENTERED MEDICAL HOMES

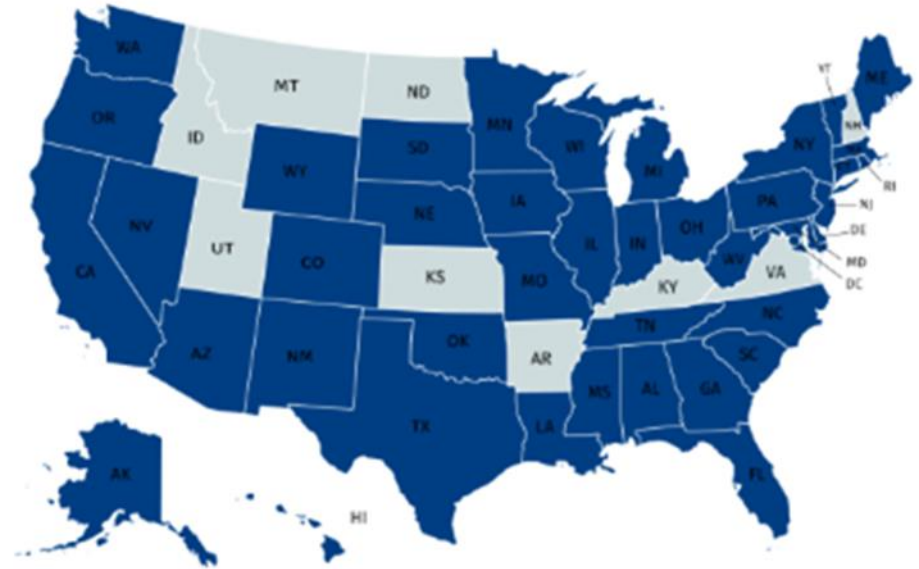
**Ellen Wagner, MPH, MS**  
Adolescent Health Initiative

# ADOLESCENT HEALTH INITIATIVE



The Adolescent Health Initiative (AHI) provides training, technical assistance, and coaching to health care providers, health systems, and organizations across the country to improve adolescent-centered care.

Our vision is to transform the health care landscape to optimize adolescent and young adult health and well-being




# TEEN ADVISORY COUNCIL



# OBJECTIVES



AT THE CONCLUSION OF THIS SESSION , ATTENDEES WILL...

1. Describe the core components of adolescent-centered care
  2. Identify opportunities to improve delivery of adolescent-centered care in their own practice or organization
  3. Utilize tools and resources to help health care professionals enhance adolescent-centered practices
- 

# WHY IS ADOLESCENT-CENTERED CARE IMPORTANT?

---

*Missed opportunities for providing patient-centered care and impacting adolescent patient outcomes.*





### Being Youth-Friendly

Introduce your team to elements of an adolescent-centered environment and identify key staff and provider behaviors essential to providing youth-friendly care.

# SPARK TRAINING

## Being Youth-Friendly





How did it  
feel to  
participate in  
the Spark?



How might  
you use this?  
Who would  
be your  
audience?

# USING SPARKS TO BUILD PARTNERSHIPS



Share with your team

Offer as a resource  
to a local partner

Lead a training for  
local partner

Organize a  
community summit

Lead at a local  
coalition or  
community meeting

Other ideas!



# ADOLESCENT CENTERED ENVIRONMENT DOMAINS



1. Access to Care
2. Adolescent-Centered Environment
3. Confidentiality
4. Best Practices & Standards of Care
5. Reproductive & Sexual Health
6. Behavioral Health
7. Nutritional Health
8. Cultural Responsiveness
9. Staff Attitude & Respectful Treatment
10. Adolescent Engagement & Empowerment
11. Parent Engagement
12. Community Engagement

# PROCESS



## Planning (3 months)

### ACE-AP Team



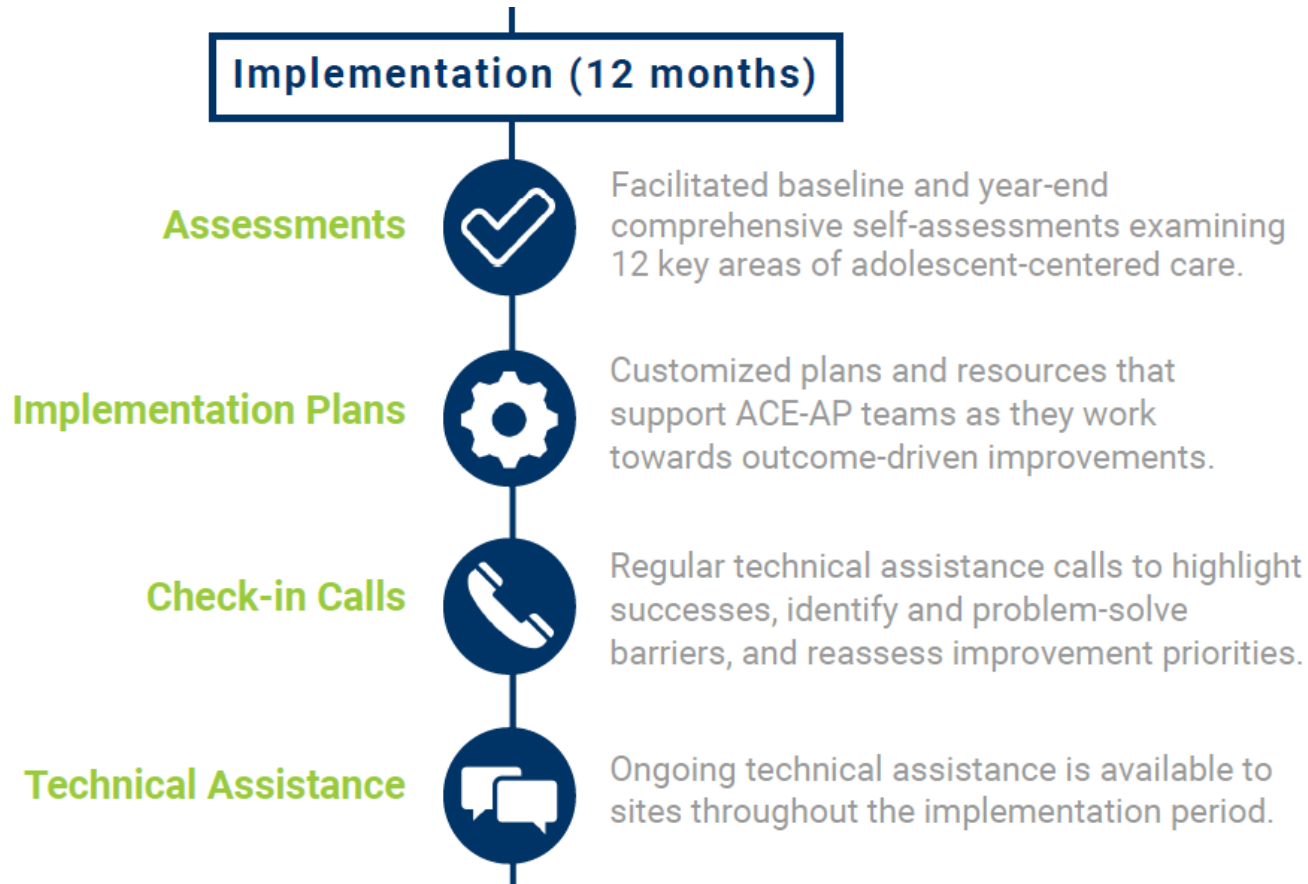
A team including a provider, a health center manager, and committed staff who dedicate 1-3 hours/month to the project.

### Data Collection

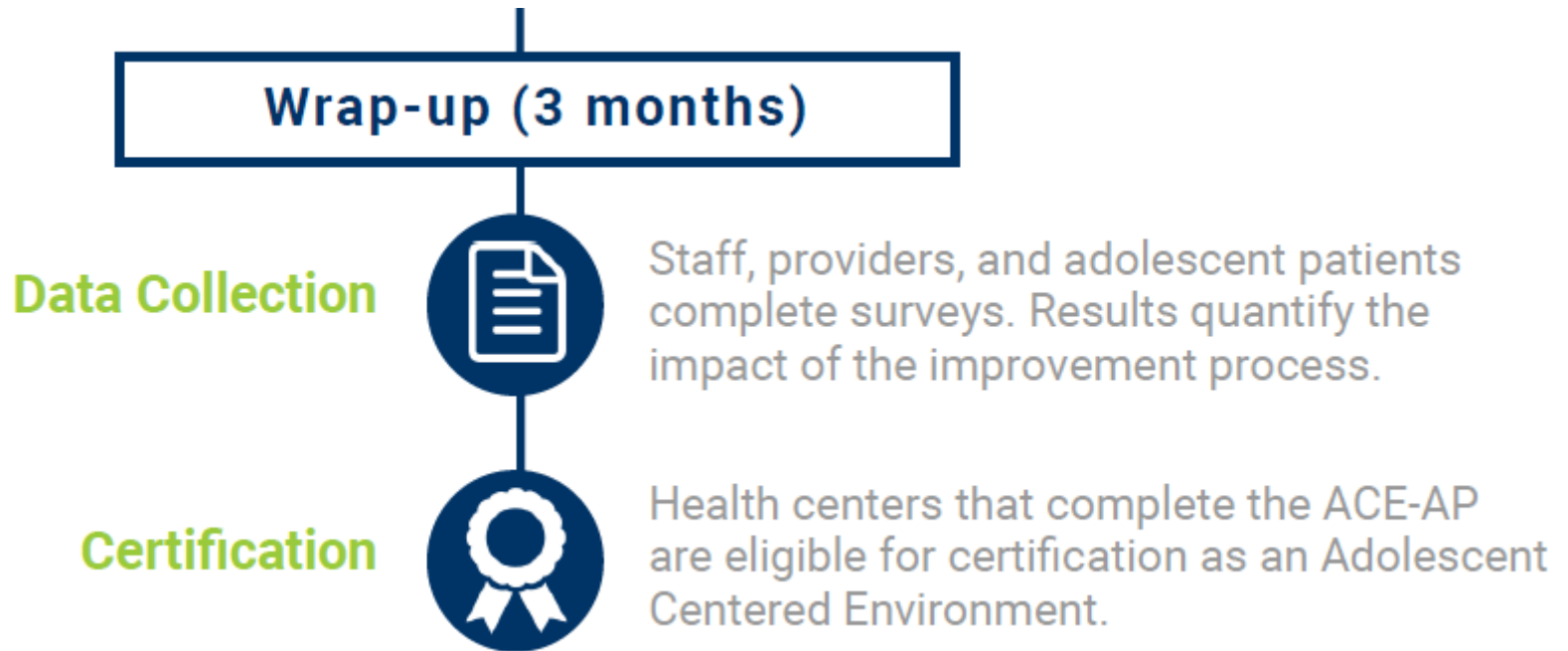


Staff, providers, and adolescent patients complete surveys. Results help sites identify areas for improvement.

# PROCESS



# PROCESS



# ACE-AP IMPACT

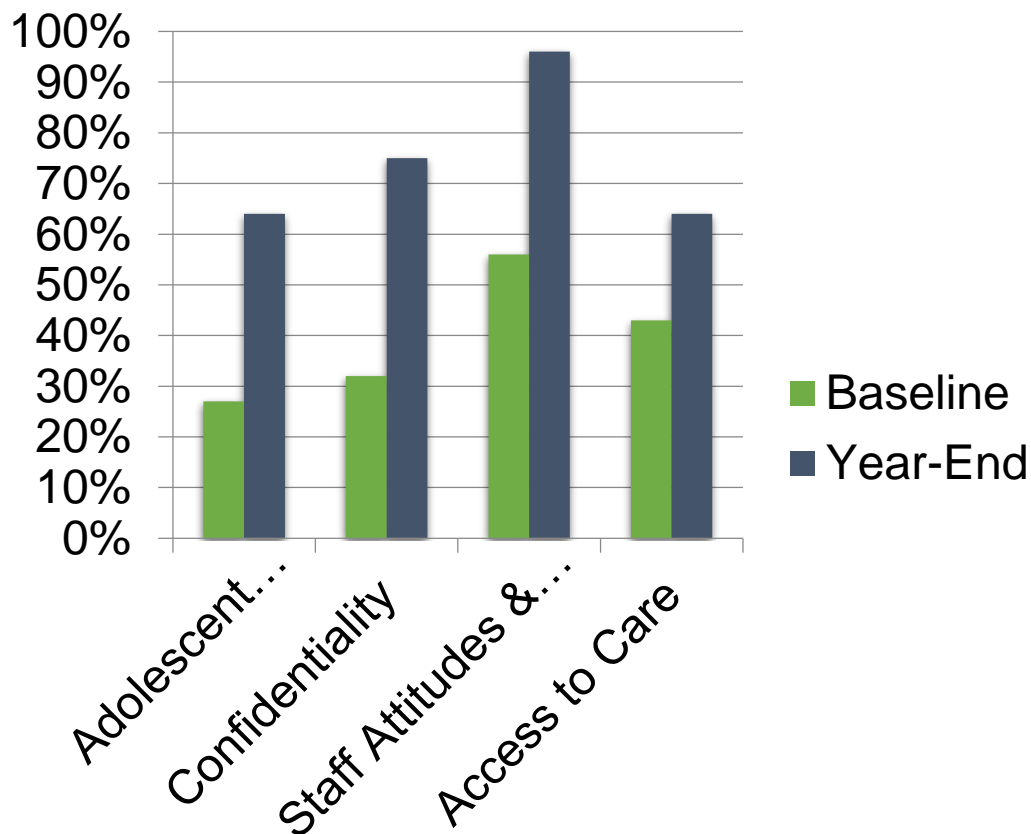


At baseline, participating health centers had implemented **40%** of adolescent-centered indicators on the ACE-AP assessment.

Implementation rates increased to **72%** at year-end.

Areas with the greatest improvement include:

- Adolescent Appropriate Environment
- Confidentiality
- Staff Attitudes & Respectful Treatment
- Access to Care



# RECOGNITION



***2017 Innovative Program Award***

Society of Teachers of Family Medicine



***2016 Innovative Approaches to Adolescent Health Care Award***

Society of Adolescent Health and Medicine



***2015 Outstanding Emerging Innovation Award***

Healthy Teen Network



# GATHERING YOUTH FEEDBACK: YOUTH-LED ASSESSMENT



Encourage young people to reflect on what's important to them when accessing health care.

What Matters to You(th)?

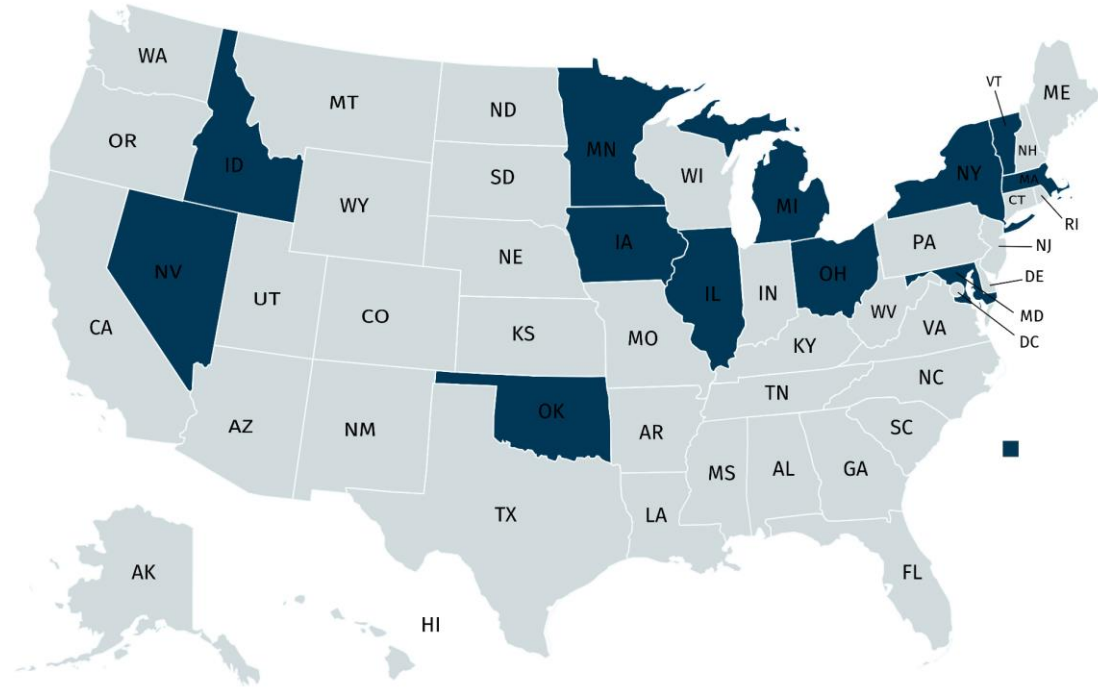
THIS HEALTH CENTER...		No	Partially	Yes
1.	Is in a location that young people in the community can easily get to.			
2.	Has walk-in or drop-in appointments.			
3.	Makes their hours visible (listed on the website, posted on the front door, etc.).			
4.	Is open during times that are convenient for young people (after-school, weekend hours, etc.).			
5.	Has a physical space that is welcoming to young people (appealing artwork, posters, free WiFi, etc.).			
6.	Has a check-in and check-out area that feels private.			
7.	Has exam rooms that feel private (soundproof, etc.).			
8.	Has confidential services for youth.			
9.	Posts information about confidential services in places that youth can easily see.			
10.	Has services that are free or low-cost for youth.			
11.	Posts information about free or low-cost services in places that youth can easily see.			
12.	Posts visual cues (rainbow stickers, pamphlets, etc.) to indicate that LGBTQ+ youth are welcomed.			
13.	Has an all-gender bathroom in a convenient location.			
14.	Provides services in the languages spoken by youth in your area.			
15.	Posts information about the languages staff speak in places youth can easily see.			
16.	Has mental health services for youth.			
17.	Posts information about mental health services in places that youth can easily see.			
18.	Has health education materials (brochures, etc.) that are easy to understand and appealing to youth.			
19.	Provides free menstrual products.			
20.	Provides free condoms.			
21.	Provides multiple birth control methods (pill, patch, LARCs, emergency contraception, etc.).			
22.	Provides pregnancy testing and comprehensive options counseling.			
23.	Provides testing and treatment for sexually transmitted infections (STIs).			

Youth-led Assessment

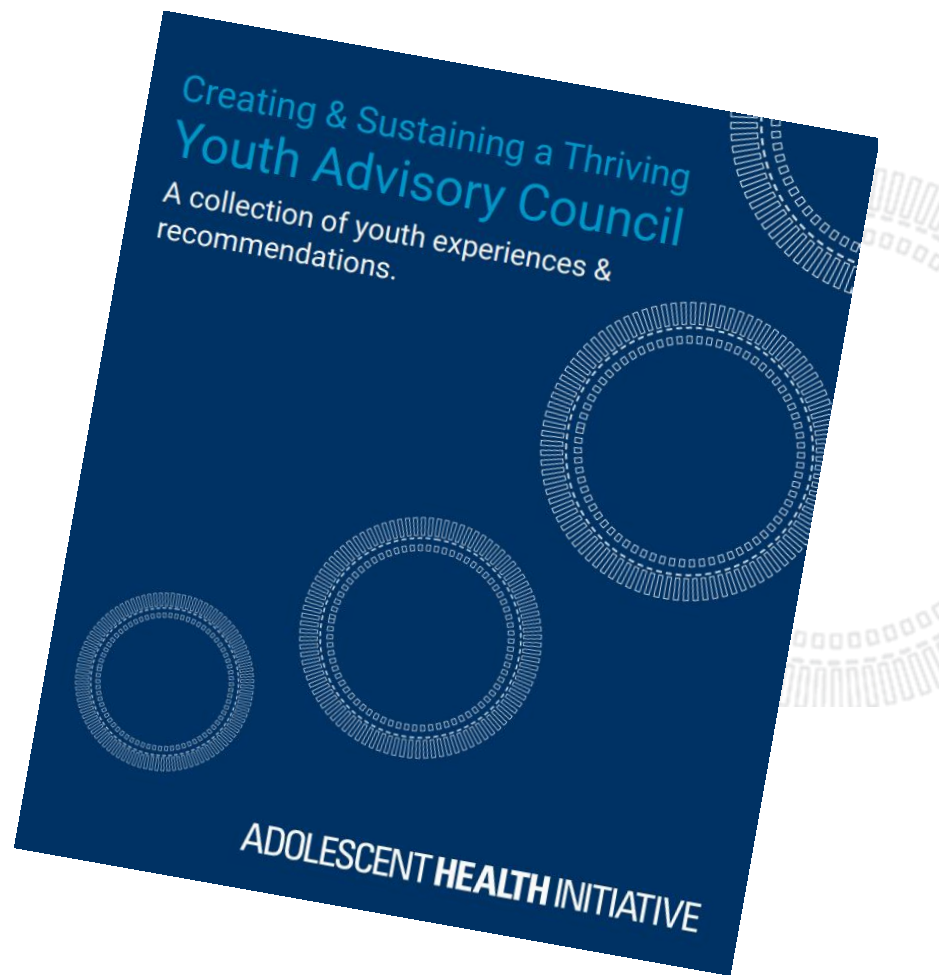
# GATHERING YOUTH FEEDBACK



## Pilot results



# YOUTH ADVISORY COUNCIL



# WELCOMING ENVIRONMENT



**WE'RE  
HERE  
FOR  
YOU**

As in, you can ask us anything.

Really.

Don't worry if this takes a minute to sink in.

We're not going anywhere.

Take your time.

And if we don't hit the mark, let us know.

**ADOLESCENT HEALTH INITIATIVE**  
Transforming adolescent and young adult health

**TAKE CHARGE OF YOUR HEALTH CARE**

**AGE 11-12**

- ✓ Know your health care rights.
- ✓ Learn your personal and family medical histories, including any medications and allergies.
- ✓ Know your medications and take them on schedule.
- ✓ Talk directly with the health care provider at your appointment: Be honest and ask questions.

**AGE 13-14**

- ✓ Ask to spend time alone with your health care provider during your visit.
- ✓ If available, set up an online portal to view medical information and message your health care provider.
- ✓ Check in for your appointment yourself.

**AGE 15-16**

- ✓ Make your own appointments.
- ✓ Call your pharmacy to refill your prescriptions.
- ✓ Know how to contact all of your health care providers (doctor, dentist, etc.).
- ✓ Learn about your health insurance and carry your card.
- ✓ If you don't have insurance, ask about your options.

**AGE 17-18**

- ✓ If you are moving away from home or need to switch to an adult care provider, make a plan for where you will receive health care next.
- ✓ Transfer your medical records to your new health care provider, if applicable.
- ✓ Ask your health care provider what your privacy rights will be when you turn 18.
- ✓ Make sure you will still have health insurance after turning 18. If you won't, talk to your health care provider about options.

**ADOLESCENT HEALTH INITIATIVE**

www.adolescenthealthinitiative.org

© 2017 Regents of the University of Michigan

[www.AdolescentHealthInitiative.org](http://www.AdolescentHealthInitiative.org)

# IMPROVING CARE FOR ADOLESCENTS



## Resources That Can Help

AHI offers training, consulting, and ready-to-implement strategies to help health centers across the country improve their adolescent-centered care.



**Consulting & Technical Assistance**



**ACE-AP**



**Adolescent Champion Model**



**Spark Trainings**



**Starter Guides**



**Videos**



**Webinars & Trainings**



**Health Center Materials**

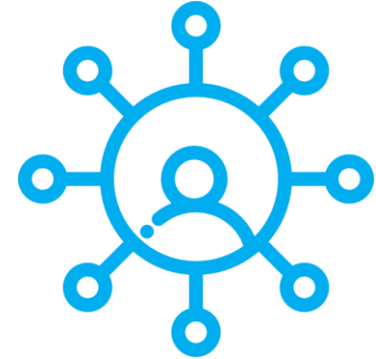
# REFLECTION



Think



Pair



Share





What can I do to  
improve  
adolescent-  
centered care?

# THANK YOU!



ADOLESCENT **HEALTH** INITIATIVE

# CONNECT WITH US



Adolescent\_Hlth



adolescent\_health



Adolescent Health Initiative

adolescenthealth@umich.edu

[www.AdolescentHealthInitiative.org](http://www.AdolescentHealthInitiative.org)