



# Journey to Health in All Policies (HiAP): Lessons Learned by the Kent County Health Department

Presented on October 16, 2019  
Michigan's Premier Public Health Conference

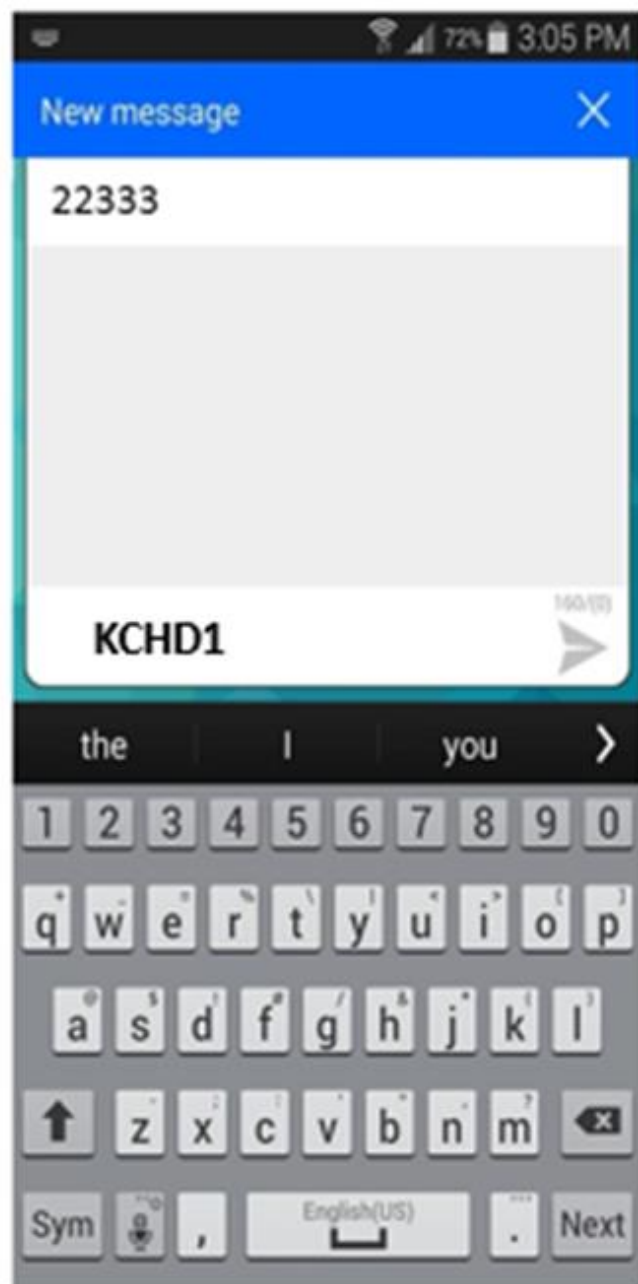
Teresa Branson, MHA, Deputy Administrative Health Officer

Cassie Kobler, MPA, Public Health Program Supervisor



**HEALTH**  
DEPARTMENT  
*Caring today for a healthy tomorrow*





## INSTRUCTIONS FOR PARTICIPATING IN TODAY'S LIVE POLLING

- Open a **blank text message** on your smartphone.
- Type **22333** in the "To" field of the text message.
- Type **KCHD1** as the body of the text message. [note: this is *not* case-sensitive]
- You have now joined the session!
- For each polling question, type your response to the question and send through this same text message. (i.e. if you want to respond with answer choice "A", type "A" and then send.
- At the end of today's convening, type the word "LEAVE" into the text message to end your participation in the polling.





# Which Michigan County are you representing today?

# How familiar with HiAP are you?

I am familiar with HiAP. **A**

I am familiar with HiAP and  
have been involved with HiAP  
efforts. **B**

I regularly utilize HiAP efforts in  
my public health practice. **C**

What the heck is HiAP? **D**

# Agenda

- ☐ Kent County Journey
- ☐ Institutionalizing HiAP
- ☐ Building Capacity
- ☐ Developing Tools
- ☐ Engaging Community
- ☐ Implementing HiAP
- ☐ Local Awareness & Education





# Journey to HiAP

- 2012-Present: Health Equity and Social Justice Dialogue Workshops
- 2014-2018: Racial & Ethnic Approaches to Community Health (REACH) grant



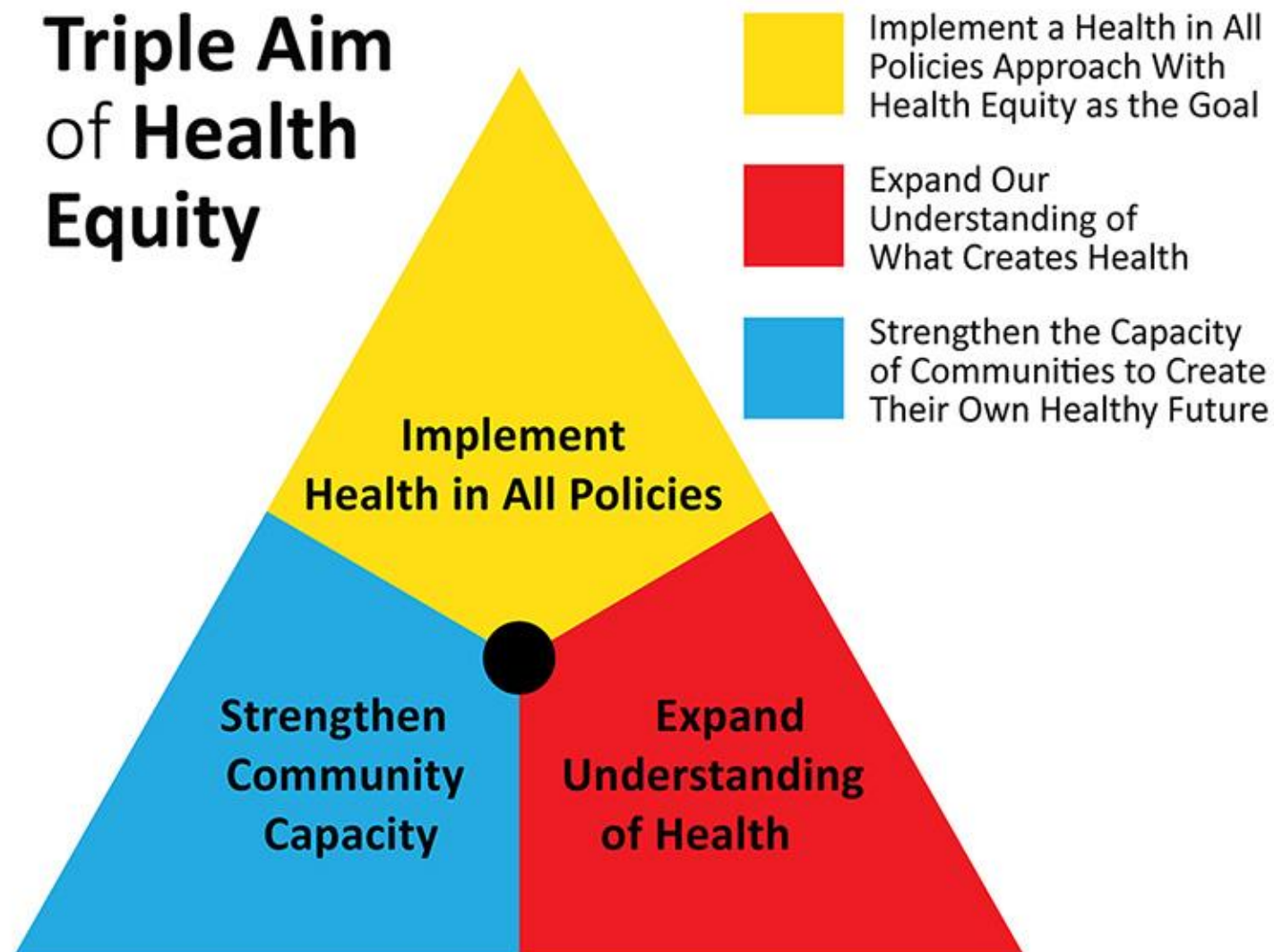


# Journey to HiAP Continued

- 2017: Presentation to West MI City and County Managers
- 2017: Health in All Policies (HiAP) Toolkit and Website Developed
- 2017: HiAP Campaign Kickoff - Engaged 150 Community Leaders in “**A Healthy Community for All**” Event Focused on HiAP
- 2018: HiAP Learning Labs, Health Lens Checklist Utilization and HiAP Pledge
- 2018: County incorporated a Diversity, Equity and Inclusion Strategic Plan



# Triple Aim of Health Equity



SOURCE: Association of State and Territorial Health Officials (ASTHO)





# How Does Kent County Institutionalize Health Equity?

- Mission & Guiding Principles
- Comprehensive Cultural Competency Policy
- Strategic Plan
  - Health Equity Organizational Assessment
  - Health Equity & Social Justice Dialogue Workshops
    - 2 day Dialogue Workshop for KCHD and Community
    - 2 ½ day Dialogue Workshop option for other County Departments
  - Staff Performance Review
  - HiAP
  - Maternal Child Health Plan



**HEALTH**  
DEPARTMENT  
*Caring today for a healthy tomorrow*



# How Does Kent County Build Capacity?

- Community Engagement
  - Build Trust
- Health in All Policies Learning Labs
  - Health in All Policies Toolkit & web-page
  - Health in All Policies Pledge
- Sharing our Work/Best Practices
  - NACCHO, GLC SOPHE, National SOPHE, HRSA Region V Public Health Training Center
- Train the Trainer (local & statewide)
  - Currently 5 Facilitators
  - HiAP Learning Labs
  - Health Equity Dialogue Workshops
- Health Equity Organizational Assessment Tool
- Administer to KCHD staff and community partners in 2019



# Public Health Advisory Commission

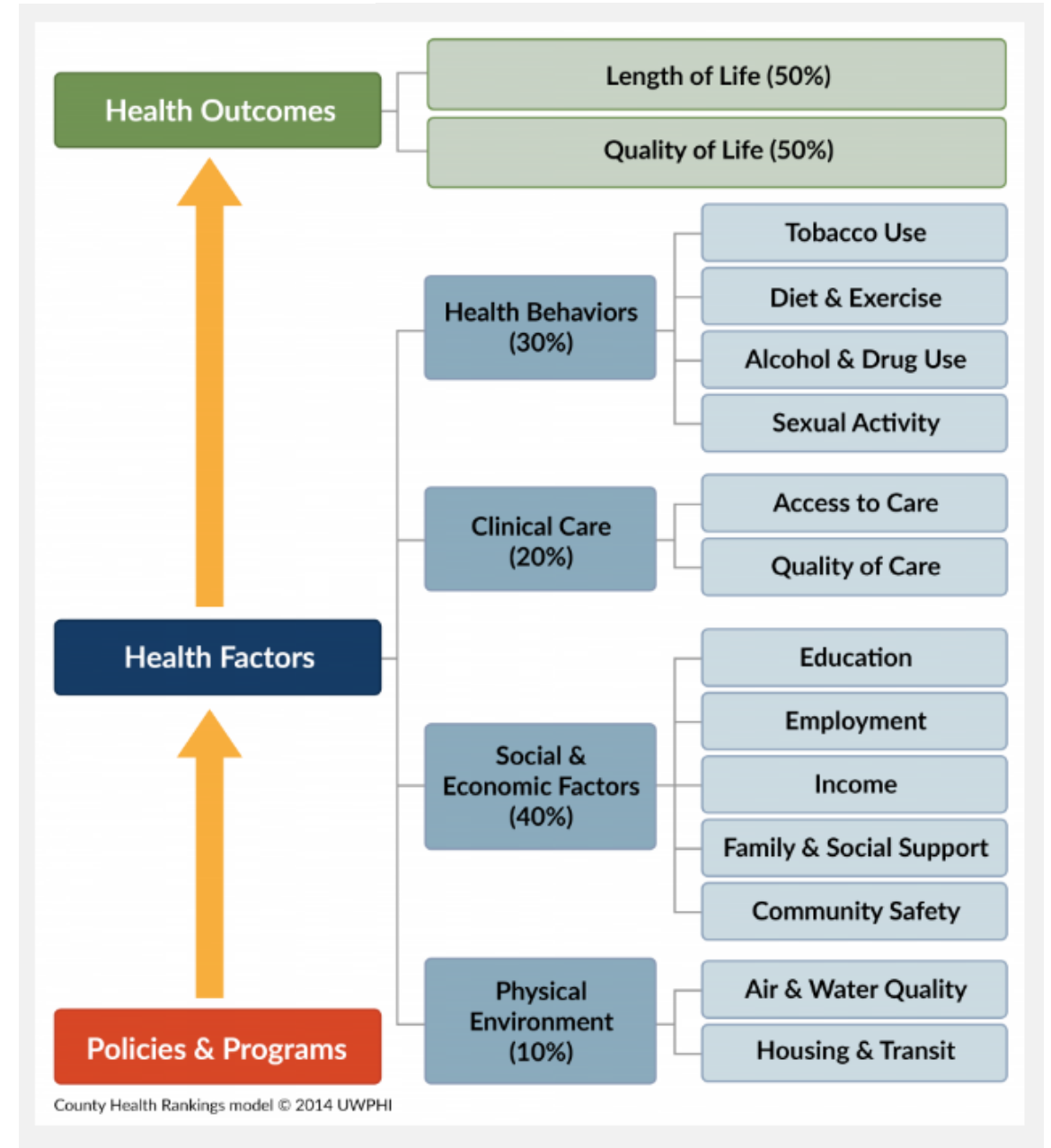
- 39 Recommendations from Final Report (April 2017)
  - Three Recommendations with the highest priority
    - Public Health Advisory Council, HiAP, Comprehensive review of funding
  - Public Health Advisory Council
    - The goal of the newly formed Public Health Advisory Council is to develop and propose an action plan to implement these recommendations.
    - During 2018, the group selected 4 of the recommendations to pursue and created workgroups around them.
  - HiAP Workgroup
    - “Ensure all state departments utilize a HiAP approach when implementing policies and programs.”
    - Workgroup developed a “one-page summary” to provide an overview of HiAP for representatives of the state departments, with the intent of following up with a 2-hour training for key departmental staff at some point in the 2019 calendar year.



# Expanding our understanding of health

## PLACE MATTERS:

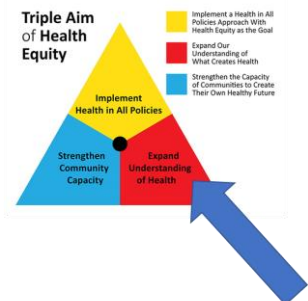
The choices that people make are often shaped by the choices that people have AND by the **Policies**, **Systems** and **Environmental** change needed to support a healthy community for all!





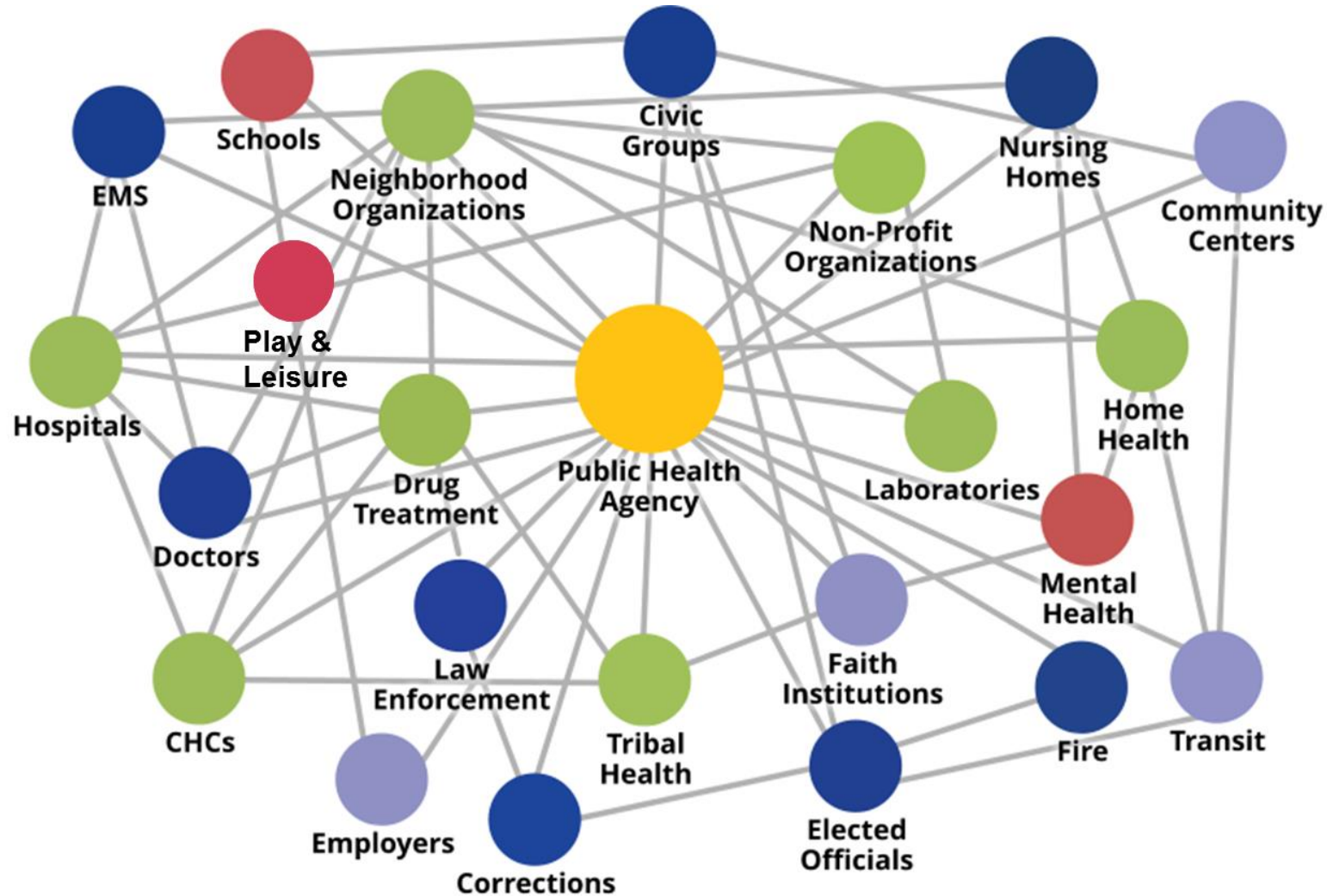
# 10 Things to Know About Health

- Health is more than health care.
- Health is tied to the distribution of resources.
- Racism imposes an added health burden.
- The choices we make are shaped by the choices we have.
- High demand + low control = chronic stress
- Chronic stress can be toxic.
- Inequality – economic and political – is bad for our health.
- Social policy is health policy.
- Health inequalities are not natural.
- We all pay the price for poor health.





# Public Health System





# Health Equity

- ***Health Equity*** is when all people have the opportunity to attain their full health potential and no one is disadvantaged from achieving this potential because of their social position or other socially determined circumstance.

-Centers for Disease Control and Prevention (CDC)





## Equality



## Equity



© 2017 Robert Wood Johnson Foundation.  
May be reproduced with attribution.





# Social Determinants of Health

- ***Social Determinants of Health*** are the complex, integrated, and overlapping social structures and economic systems that are responsible for most health inequities. These social structures and economic systems include the social environment, physical environment, health services, and structural and societal factors. Social determinants of health are shaped by the distribution of money, power, and resources throughout local communities, nations, and the world.

-Centers for Disease Control and Prevention (CDC)



# Determinants of Equity





“It is unreasonable to expect that people will change their behavior easily when so many forces in the social, cultural and physical environment conspire against such change.”

- Institute of Medicine



“All policy is health policy.”

- Dr. David R. Williams



# HiAP Definitions

- **National Association of County and City Health Officials (NACCHO):** “a change in the systems that determine how decisions are made and implemented by local, state, and federal government to ensure that policy decisions have neutral or beneficial impacts on the determinants of health. HiAP emphasizes the need to collaborate across sectors to achieve common health goals, and is an innovative approach to the processes through which policies are created and implemented.
- **State of Michigan Public Health Advisory Council:** “a way to operationalize the understanding that health is affected by multiple sectors of our society and those sectors all have a role to play in helping people get and stay healthy.”

## Health in All Policies





# What is HiAP?

- **Health in All Policies is not a new concept.** It builds on a long public health trajectory of successful collaboration (e.g., water fluoridation, reduce lead exposure, reduce tobacco exposure, improve sanitation and drinking water quality, requiring the use of seatbelts and child car seats, mass incarceration as a health crisis).
- **Integrates health concerns into policies, laws, projects, programs, and funding decisions that typically do not consider the health impacts.**
- Health in All Policies is an approach. There's flexibility in the way that a community decides to implement HiAP. **There's not one right way, but there are best practices, tools, and resources.**



# Five Key Elements of HiAP

## **1. Promote health, equity, and sustainability.**

- Incorporate into specific policies, programs, and processes.
- Embed into government decision-making processes to support healthy public policy.

## **2. Support intersectoral collaboration.**

- Many sectors play a major role in shaping the economic, physical, and social environments in which people live.

## **3. Benefit multiple partners.**

- Address public health and other agency policy/programmatic goals and implement common strategies.

## **4. Engage multiple stakeholders.**

- To be responsive to community needs and to identify policy and systems change to create meaningful and impactful health improvements.

## **5. Create structural or process change.**

- Institutionalize a HiAP approach throughout local government to ensure a health lens in decision-making processes.



# Why Do We Need HiAP?

- **Our communities are facing increasingly complex problems.**
- Health is determined by many factors other than those we associate with physical well-being.
- Collaboration across sectors promotes efficiency by identifying issues being addressed by multiple agencies which help to decrease costs and improve population health outcomes.
- Sometimes policy doesn't take health into account because efforts are isolated, uncoordinated and inconsistent.
- HiAP is an innovative response to increasingly siloed government structures, rising healthcare costs, **growing inequities, and growing awareness of the impact of the social determinants of health.**





# What makes it easier for you to be healthy?



# What Does EQUITY Look Like?





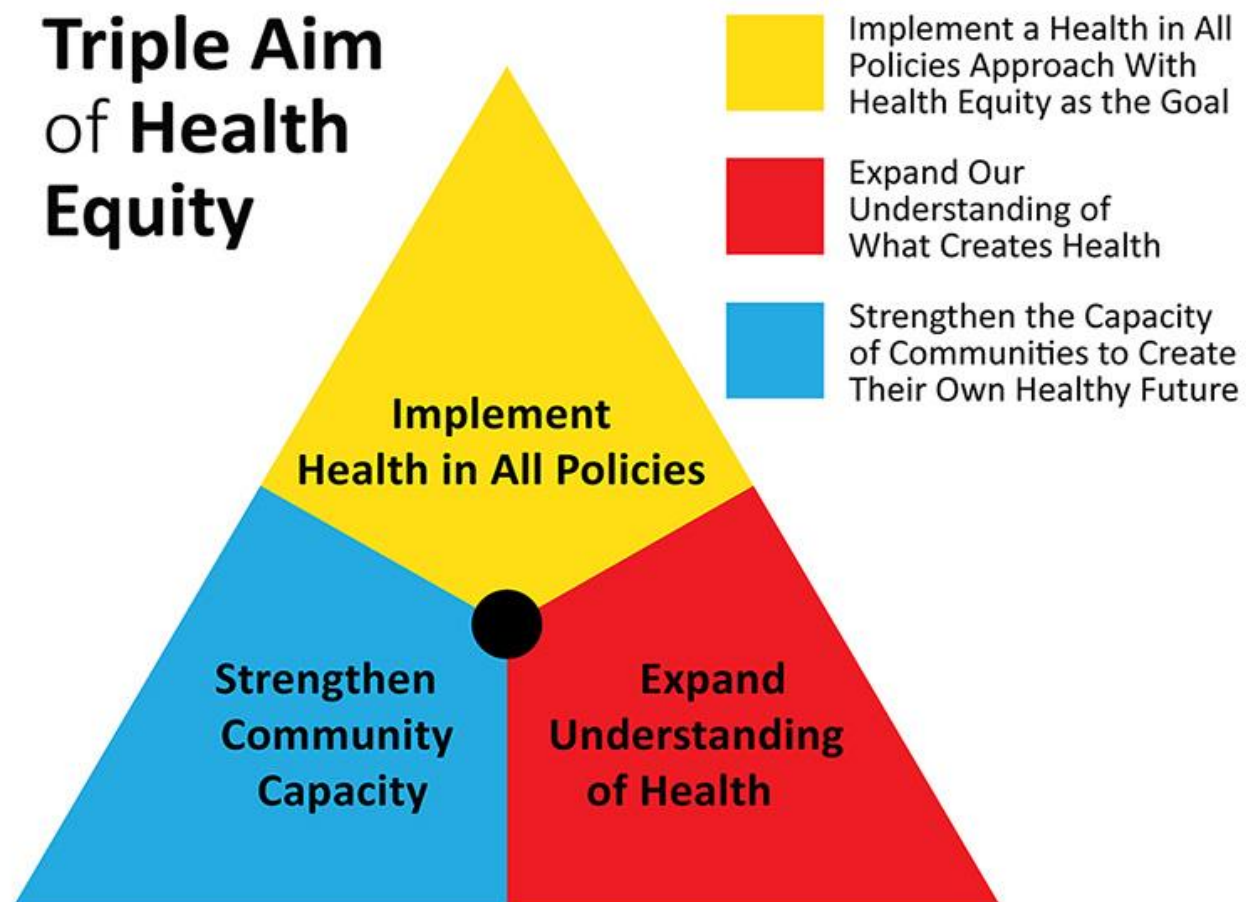
“What would it look like if equity was the starting point for decision making?”

- Dr. Edward Ehlinger, MN Commissioner of Health & Former President of ASTHO





# Putting it all together



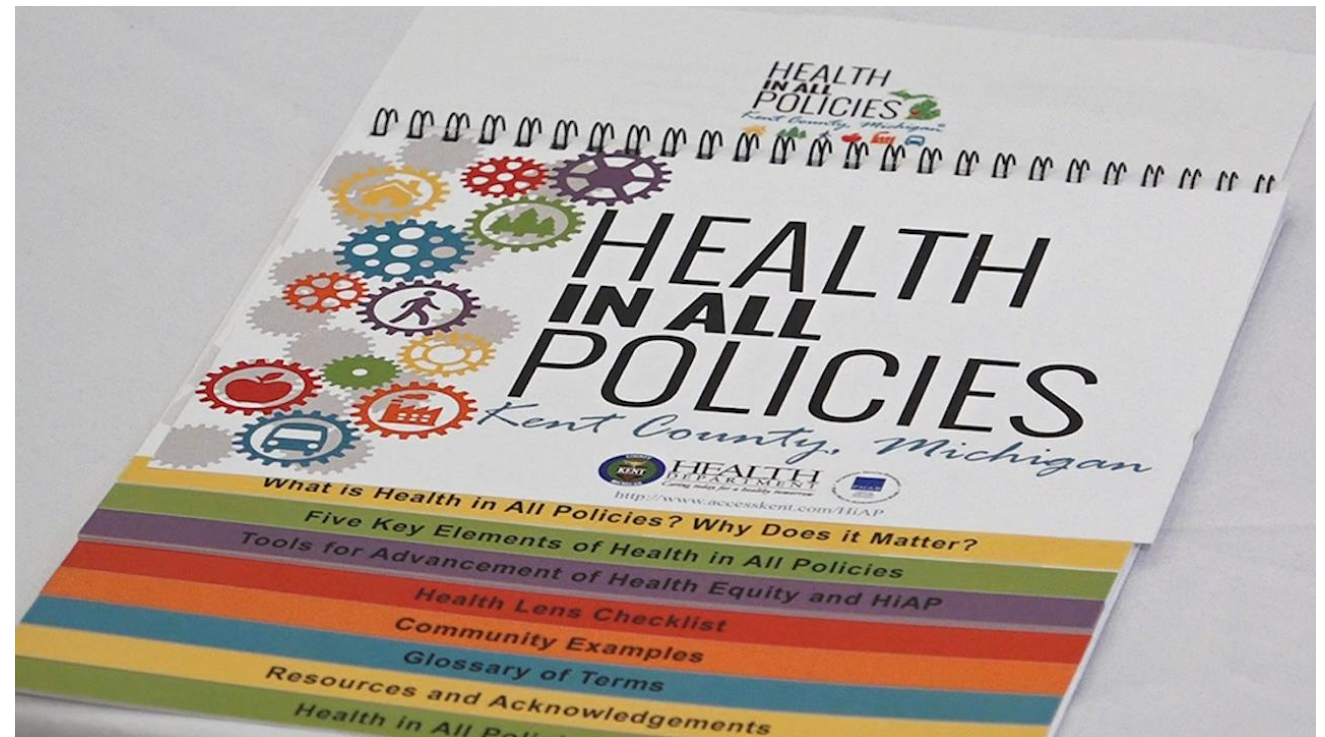
SOURCE: Association of State and Territorial Health Officials (ASTHO)





# Two Hour HiAP Learning Lab

- Overview of Health Equity & Social Justice
- Resources
- Tools
- Interactivities
- Community examples (resolutions, ordinances, etc.)
- A call to action



<https://www.accesskent.com/Health/HiAP/default.htm>



# HiAP Tools & Instruments

- **Inter-departmental committees**
- Cross-sector action teams
- **Partnership Platforms**
- Cross-cutting information, evaluation systems, common data and indicators
- **Health Lens Analysis- Health Lens Checklist**
- Health Impact Assessments
- Racial Equity Impact Assessments
- Legislative Frameworks
- **Community Consultations**



# What's Next for HiAP in Kent County?

- Local
  - HiAP Learning Labs for Community
  - Integrating HiAP in KCHD programs, services, and policies
    - Health Promotions Strategy
  - Build capacity via train-the-trainer (HESJ & HiAP)
- State
  - Michigan Public Health Advisory Commission
  - Engage Local Health Departments in HiAP Learning Labs
  - Build capacity via train-the-trainer (HESJ & HiAP)





# Michigan Strategies for Implementing HiAP

- All state departments utilize a Health in All Policies approach when implementing policies and programs.
  - Public Health Impact Statements
  - State Department conduct Public Health Assessment
  - State Department Mission
  - Environmental Justice
  - Engage State Departments in HiAP learning opportunities

What is your role in the community?			
Government Agency Worker or Elected Official	Community Organization or Group	Business Owner or Manager	Resident
Ideas for Next Steps			
<ul style="list-style-type: none"> <li>• Engage in HiAP or equity learning opportunities</li> <li>• Participate in community engagement opportunities</li> <li>• Establish a HiAP task force</li> <li>• Propose a Health Impact Assessment</li> <li>• Use the Health Lens Checklist</li> <li>• Consider adoption of HiAP or an Equity Ordinance</li> <li>• Pass a County, City or Township HiAP Resolution</li> </ul>	<ul style="list-style-type: none"> <li>• Engage in HiAP or equity learning opportunities</li> <li>• Participate in community engagement opportunities</li> <li>• Convene or join a HiAP task force</li> <li>• Propose a Health Impact Assessment</li> <li>• Use the Health Lens Checklist</li> <li>• Adopt a HiAP framework for practices, programs or services</li> </ul>	<ul style="list-style-type: none"> <li>• Engage in learning opportunities</li> <li>• Participate in community engagement opportunities</li> <li>• Support or propose a Health Impact Assessment</li> <li>• Use the Health Lens Checklist</li> <li>• Adopt a HiAP framework for practices, programs or services</li> <li>• Apply a health equity lens to decision-making processes</li> </ul>	<ul style="list-style-type: none"> <li>• Engage in HiAP or equity learning opportunities</li> <li>• Participate in community engagement opportunities</li> <li>• Use the Health Lens Checklist</li> <li>• Advocate for HiAP to agencies, community leaders, or elected officials</li> <li>• Champion HiAP where you live, learn, work and play</li> </ul>



# Next steps I will take to Advance HiAP in my community

Engage in HiAP or equity learning opportunities

Participate in community engagement opportunities

Use the Health Lens Checklist or other HiAP tool(s)

Advocate for HiAP to agencies, community leaders, or elected officials

Champion HiAP where I live, learn, work and play



Thank You!  
Any  
Questions?

### Presenter Contact Information:

- ☐ Teresa L. Branson, Deputy Administrative Health Officer:  
[teresa.branson@kentcountymi.gov](mailto:teresa.branson@kentcountymi.gov)
- ☐ Cassie Kobler, Public Health Program Supervisor:  
[cassandra.kobler@kentcountymi.gov](mailto:cassandra.kobler@kentcountymi.gov)
- ☐ [hiap@kentcountymi.gov](mailto:hiap@kentcountymi.gov)

